

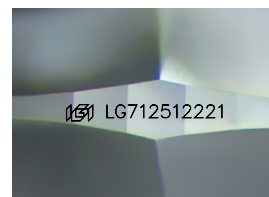
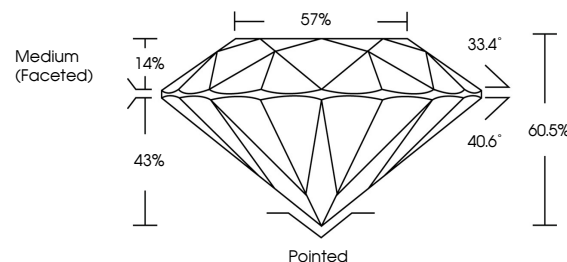


ELECTRONIC COPY

LABORATORY GROWN DIAMOND REPORT

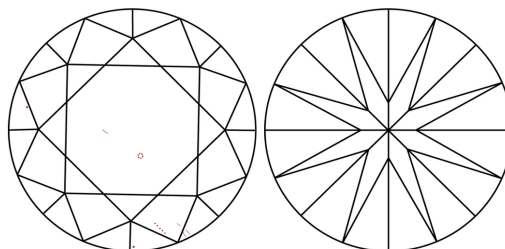
LG712512221
Report verification at lgi.org

PROPORTIONS



Sample Image Used

CLARITY CHARACTERISTICS



KEY TO SYMBOLS

Red symbols indicate internal characteristics.
Green symbols indicate external characteristics.

COLOR

D E F G H I J Faint Very Light Light

CLARITY

IF VS¹⁻² VS¹⁻² SI¹⁻² I¹⁻³

Internally Flawless	Very Very Slightly Included	Very Slightly Included	Slightly Included	Included
------------------------	--------------------------------	---------------------------	----------------------	----------



© IGI 2020, International Gemological Institute

FD - 10 20

www.igi.org

LABORATORY GROWN DIAMOND REPORT



July 2, 2025

IGI Report Number **LG712512221**

Description	LABORATORY GROWN DIAMOND
-------------	--------------------------

Shape and Cutting Style **ROUND BRILLIANT**

Measurements 7.55 - 7.56 X 4.57 MM

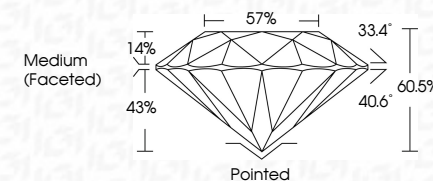
GRADING RESULTS

Carat Weight 1.59 CARAT

Color Grade E

Clarity Grade WS 2

Cut Grade **IDEAL**



ADDITIONAL GRADING INFORMATION

Polish **EXCELLENT**Symmetry **EXCELLENT**Fluorescence **NONE**Inscription(s) LG712512221

Comments: As Grown - No indication of post-growth treatment.

This Laboratory Grown Diamond was created by High Pressure High Temperature (HPHT) growth process.

Type II



IG

<p>JULY 2, 2005</p> <p>Report No. G571261221</p> <p>ROUND BRILLIANT</p>	<p>1.59 CARAT</p> <p>E</p> <p>VVS2</p> <p>IDEAL</p> <p>60.5%</p> <p>57%</p> <p>Medium (Faceted)</p>	<p>Pointed</p> <p>EXCELLENT</p> <p>EXCELLENT</p> <p>NONE</p> <p>GSI G571261221</p>
---	---	--