

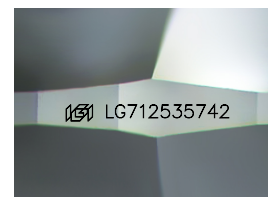
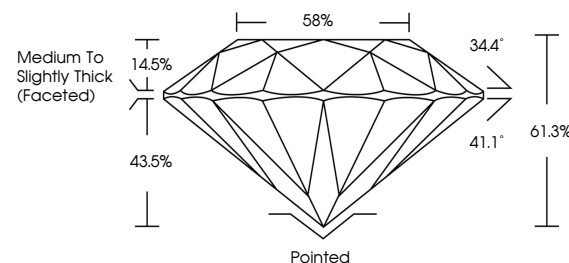


**ELECTRONIC COPY**

## LABORATORY GROWN DIAMOND REPORT

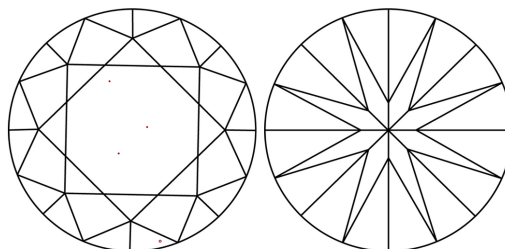
LG712535742  
Report verification at [igi.org](https://igi.org)

## PROPORTIONS



Sample Image Used

## CLARITY CHARACTERISTICS



## KEY TO SYMBOLS

Red symbols indicate internal characteristics.  
Green symbols indicate external characteristics.

## COLOR

D E F G H I J Faint Very Light Light

## CLARITY

IF WS<sup>1-2</sup> VS<sup>1-2</sup> SI<sup>1-2</sup> |<sup>1-3</sup>

| Internally<br>Flawless | Very Very<br>Slightly Included | Very<br>Slightly Included | Slightly<br>Included | Included |
|------------------------|--------------------------------|---------------------------|----------------------|----------|
|------------------------|--------------------------------|---------------------------|----------------------|----------|



June 12, 2025

IGI Report Number **LG712535742**Description **LABORATORY GROWN DIAMOND**Shape and Cutting Style **ROUND BRILLIANT**

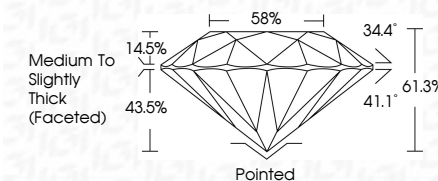
Measurements 6.58 - 6.61 X 4.05 MM

## GRADING RESULTS

Carat Weight 1.08 CARAT

Color Grade **FANCY VIVID PINK**Clarity Grade WS 2

Cut Grade **IDEAL**



### ADDITIONAL GRADING INFORMATION

Polish **EXCELLENT**Symmetry **EXCELLENT**

Fluorescence **STRONG**

Inscription(s)  LG712535742

Comments: This Laboratory Grown Diamond was created by Chemical Vapor Deposition (CVD) growth process.

Indications of post-growth treatment.



© IGI 2020, International Gemological Institute

FD - 10 20

**www.igi.org**

THIS DOCUMENT WAS PRODUCED WITH THE FOLLOWING SECURITY MEASURES: SPECIAL DOCUMENT PAPER, INK SCREENS, WATERMARK BACKGROUND DESIGNS, HOLOGRAM AND OTHER SECURITY FEATURES NOT LISTED AND DO EXCEED DOCUMENT SECURITY INDUSTRY GUIDELINES

June 12, 2025  
GI Report No LG712535742  
ROUND BRILLIANT

|              |                                    |
|--------------|------------------------------------|
| Carat Weight | 1.08 CARAT                         |
| Color Grade  | FANCY VIVID PINK                   |
| Cut Grade    | VVS 2                              |
| Depth        | IDEAL                              |
| Table        | 61.9%                              |
| Girdle       | 58%                                |
| Culet        | Medium to Slightly Thick (Faceted) |
| Polish       | Pointed                            |
| Symmetry     | EXCELLENT                          |
| Fluorescence | EXCELLENT                          |
|              | STRONG                             |

**Comments:**  
This Laboratory Grown Diamond was  
created by Chemical Vapor Deposition  
(CVD) growth process.