

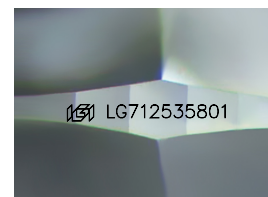
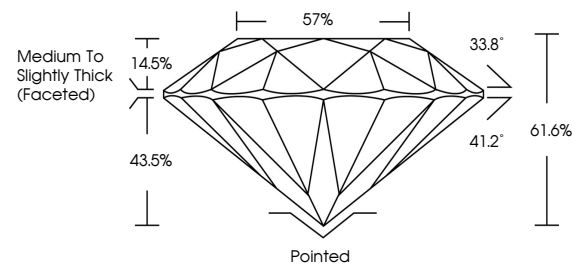


ELECTRONIC COPY

LABORATORY GROWN DIAMOND REPORT

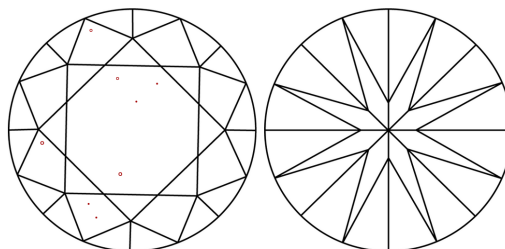
LG712535801
Report verification at igi.org

PROPORTIONS



Sample Image Used

CLARITY CHARACTERISTICS



KEY TO SYMBOLS

Red symbols indicate internal characteristics.
Green symbols indicate external characteristics.

COLOR

D E F G H I J Faint Very Light Light

CLARITY

IF WS¹⁻² VS¹⁻² SI¹⁻² |¹⁻³

Internally Flawless	Very Very Slightly Included	Very Slightly Included	Slightly Included	Included
------------------------	--------------------------------	---------------------------	----------------------	----------



June 11, 2025

IGI Report Number **LG712535801**

Description	LABORATORY GROWN DIAMOND
-------------	--------------------------

Shape and Cutting Style **ROUND BRILLIANT**

Measurements 6.48 - 6.52 X 4.00 MM

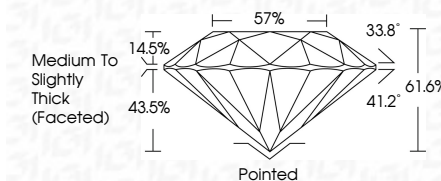
GRADING RESULTS

Carat Weight 1.03 CARAT

Color Grade **FANCY VIVID PINK**

Clarity Grade VS 2

Cut Grade **IDEAL**



ADDITIONAL GRADING INFORMATION

Polish **EXCELLENT**Symmetry **EXCELLENT**

Fluorescence SLIGHT

Inscription(s) LG712535801

Comments: This Laboratory Grown Diamond was created by Chemical Vapor Deposition (CVD) growth process.
Indications of post-growth treatment.



© IGI 2020, International Gemological Institute

FD - 10 20

www.igi.org



THIS DOCUMENT WAS PRODUCED WITH THE FOLLOWING SECURITY MEASURES: SPECIAL DOCUMENT PAPER, INK SCREENS, WATERMARK, BACKGROUND DESIGNS, HOLOGRAM AND OTHER SECURITY FEATURES NOT LISTED AND DO EXCEED DOCUMENT SECURITY INDUSTRY GUIDELINE

June 11, 2026	1.03 CARAT
GI Report No. G77/2535901	FANCY VIVID PINK
ROUND BRILLIANT	VS 2
4.68 x 4.62 x 4.00 MM	IDEAL
	61.6%
	57%
	Medium to Slightly Thick (Faceted)
	Pointed
	EXCELLENT
	EXCELLENT
	SLIGHT
	69 (G772535901)
<p>Comments:</p> <p>The laboratory Crown Diamond was a laboratory report dated 11/20/2021 for a 1.03 carat round brilliant cut VS2 pink fancy vivid diamond. The diamond was noted to have indications of post-growth treatment.</p>	