



**ELECTRONIC COPY**

## LABORATORY GROWN DIAMOND REPORT

May 29, 2025	
IGI Report Number	LG712545978
Description	LABORATORY GROWN DIAMOND
Shape and Cutting Style	ROUND BRILLIANT
Measurements	9.09 - 9.15 X 5.60 MM

## GRADING RESULTS

Carat Weight	2.87 CARATS
Color Grade	E
Clarity Grade	VS 1
Cut Grade	EXCELLENT

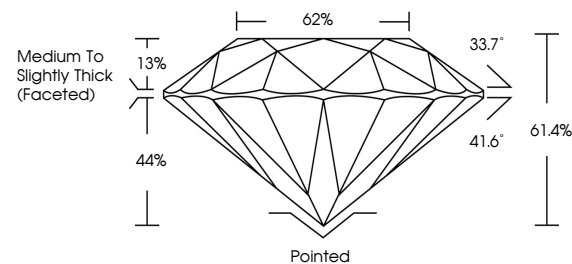
### ADDITIONAL GRADING INFORMATION

Polish	EXCELLENT
Symmetry	EXCELLENT
Fluorescence	NONE
Inscription(s)	 LG712545978

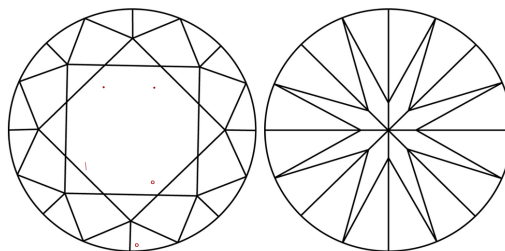
Comments: This Laboratory Grown Diamond was created by Chemical Vapor Deposition (CVD) growth process.  
Type IIa

LG712545978  
Report verification at [igi.org](https://igi.org)

## PROPORTIONS

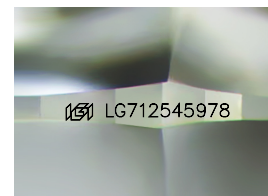


## CLARITY CHARACTERISTICS



## KEY TO SYMBOLS

Red symbols indicate internal characteristics.  
Green symbols indicate external characteristics.



Sample Image Used

## COLOR

D E F G H I J Faint Very Light Light

## CLARITY

IF      VWS<sup>1-2</sup>      VS<sup>1-2</sup>      SI<sup>1-2</sup>      I<sup>1-3</sup>

Internally Flawless	Very Very Slightly Included	Very Slightly Included	Slightly Included	Included
------------------------	--------------------------------	---------------------------	----------------------	----------

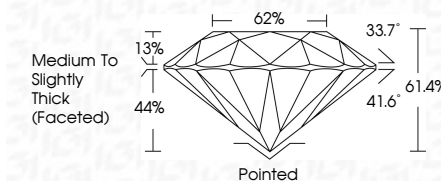
## LABORATORY GROWN DIAMOND REPORT



May 29, 2025	
IGI Report Number	LG712545978
Description	LABORATORY GROWN DIAMOND
Shape and Cutting Style	ROUND BRILLIANT
Measurements	9.09 - 9.15 X 5.60 MM

## GRADING RESULTS

Carat Weight	2.87 CARATS
Color Grade	E
Clarity Grade	VS 1
Cut Grade	EXCELLENT



### ADDITIONAL GRADING INFORMATION

Polish	EXCELLENT
Symmetry	EXCELLENT
Fluorescence	NONE
Inscription(s)	 LG712545978
<p>Comments: This Laboratory Grown Diamond was created by Chemical Vapor Deposition (CVD) growth process.</p> <p>Type IIa</p>	



© IGI 2020, International Gemological Institute

FD - 10 20

**www.igi.org**



THIS DOCUMENT WAS PRODUCED WITH THE FOLLOWING SECURITY MEASURES: SPECIAL DOCUMENT PAPER, INK SCREENS, WATERMARK, BACKGROUND DESIGNS, HOLOGRAM AND OTHER SECURITY FEATURES NOT LISTED AND DO EXCEED DOCUMENT SECURITY INDUSTRY GUIDELINE

May 29, 2025  
IGI Report No LG712545978  
ROUND BRILLIANT

<b>9.09 - 9.15 X 5.60 MM</b>		<b>2.87 CARATS</b>	
Carat Weight			<b>E</b>
Color Grade		<b>Vs 1</b>	
Clarity Grade		<b>EXCELLENT</b>	
Cut Grade		<b>61.4%</b>	
Depth		<b>62%</b>	
Table		<b>Medium To Slightly Thick (Faceted)</b>	
Grain			
Culet		<b>Pointed</b>	
Polish		<b>EXCELLENT</b>	
Symmetry		<b>EXCELLENT</b>	
Fluorescence		<b>NONE</b>	

**Comments:**  
This Laboratory Grown Diamond was created by Chemical Vapor Deposition (CVD) growth process.