



ELECTRONIC COPY

LG712578599
Report verification at igi.org



June 2, 2025
IGI Report Number **LG712578599**
Description **LABORATORY GROWN DIAMOND**
Shape and Cutting Style **ROUND BRILLIANT**
Measurements **6.39 - 6.40 X 4.05 MM**
GRADING RESULTS
Carat Weight **1.03 CARAT**
Color Grade **F**
Clarity Grade **VVS 2**
Cut Grade **EXCELLENT**

June 2, 2025
IGI Report Number **LG712578599**
Description **LABORATORY GROWN DIAMOND**
Shape and Cutting Style **ROUND BRILLIANT**
Measurements **6.39 - 6.40 X 4.05 MM**

GRADING RESULTS

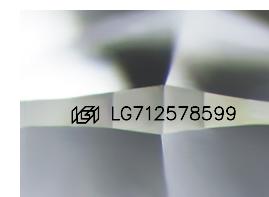
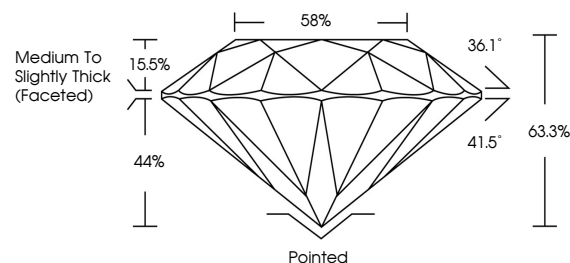
Carat Weight **1.03 CARAT**
Color Grade **F**
Clarity Grade **VVS 2**
Cut Grade **EXCELLENT**

ADDITIONAL GRADING INFORMATION

Polish **EXCELLENT**
Symmetry **EXCELLENT**
Fluorescence **NONE**
Inscription(s) **IGI LG712578599**

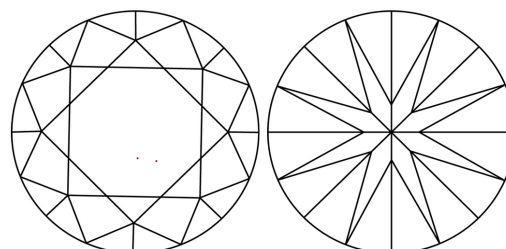
Comments: This Laboratory Grown Diamond was created by Chemical Vapor Deposition (CVD) growth process. Type IIa

PROPORTIONS



Sample Image Used

CLARITY CHARACTERISTICS



KEY TO SYMBOLS

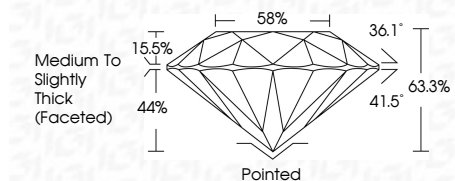
Red symbols indicate internal characteristics.
Green symbols indicate external characteristics.

COLOR

D E F G H I J Faint Very Light Light

CLARITY

IF	VS ¹⁻²	VS ¹⁻²	SI ¹⁻²	I ¹⁻³
Internally Flawless	Very Very Slightly Included	Very Slightly Included	Slightly Included	Included



ADDITIONAL GRADING INFORMATION

Polish **EXCELLENT**
Symmetry **EXCELLENT**
Fluorescence **NONE**
Inscription(s) **IGI LG712578599**
Comments: This Laboratory Grown Diamond was created by Chemical Vapor Deposition (CVD) growth process. Type IIa



June 2, 2025
IGI Report No LG712578599
ROUND BRILLIANT
6.39 - 6.40 X 4.05 MM
1.03 CARAT
F
VVS 2
EXCELLENT
63.3%
58%
Medium To Slightly Thick (Faceted)
Pointed
EXCELLENT
EXCELLENT
NONE
IGI LG712578599
Comments: This Laboratory Grown Diamond was created by Chemical Vapor Deposition (CVD) growth process. Type IIa