

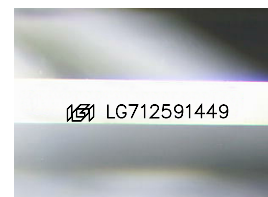
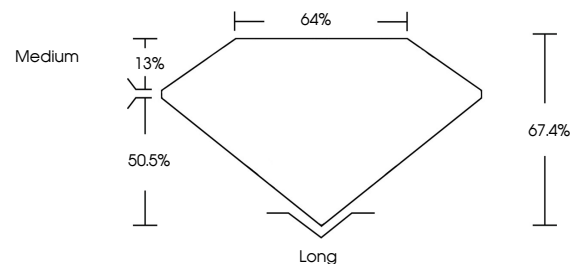


ELECTRONIC COPY

LABORATORY GROWN DIAMOND REPORT

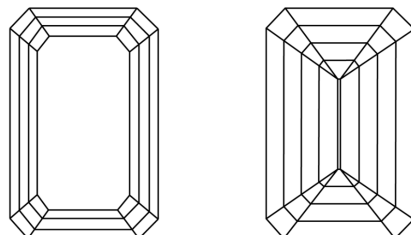
LG712591449
Report verification at igi.org

PROPORTIONS



Sample Image Used

CLARITY CHARACTERISTICS



KEY TO SYMBOLS

Red symbols indicate internal characteristics.
Green symbols indicate external characteristics.

COLOR

D E F G H I J Faint Very Light Light

CLARITY

IF WS¹⁻² VS¹⁻² SI¹⁻² |¹⁻³

Internally Flawless	Very Very Slightly Included	Very Slightly Included	Slightly Included	Included
------------------------	--------------------------------	---------------------------	----------------------	----------



© IGI 2020, International Gemological Institute

FD - 10 20

www.igi.org

LABORATORY GROWN DIAMOND REPORT



June 7, 2025

IGI Report Number **LG712591449**Description **LABORATORY GROWN DIAMOND**

Shape and Cutting Style **EMERALD CUT**

Measurements 11.00 X 7.66 X 5.16 MM

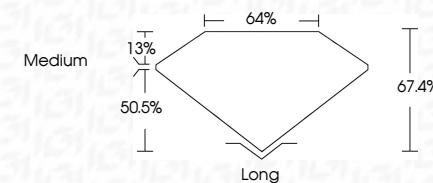
GRADING RESULTS

Carat Weight **4.37 CARATS**

Color Grade	D
-------------	---

Clarity Grade **INTERNALLY FLAWLESS**

Cut Grade **EXCELLENT**



ADDITIONAL GRADING INFORMATION

Polish **EXCELLENT**Symmetry **EXCELLENT**Fluorescence **NONE**Inscription(s) LG712591449

Comments: As Grown - No indication of post-growth treatment.

This Laboratory Grown Diamond was created by High Pressure High Temperature (HPHT) growth process.
Type II



	D	IF		Long
4.37 CARATS		EXCELLENT		EXCELLENT
		67.4%		EXCELLENT
		64%		NONE
		Medium		(89) L57/259/149
				Comments:
				As Grown - No Indication of post-growth treatment.
				This Laboratory Growth Diamond was created by High Pressure High Temperature (HPHT) growth process.
				Type II