



ELECTRONIC COPY

LABORATORY GROWN DIAMOND REPORT

LG713503621
Report verification at igi.org

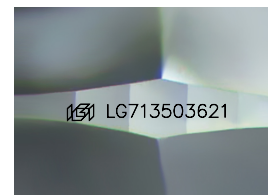
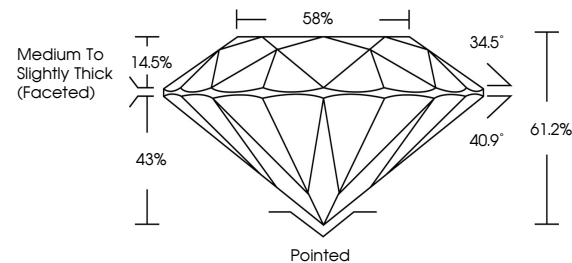
June 4, 2025	
IGI Report Number	LG713503621
Description	LABORATORY GROWN DIAMOND
Shape and Cutting Style	ROUND BRILLIANT
Measurements	6.86 - 6.91 X 4.21 MM
GRADING RESULTS	
Carat Weight	1.22 CARAT
Color Grade	D
Clarity Grade	VVS 2
Cut Grade	IDEAL

ADDITIONAL GRADING INFORMATION

Polish	EXCELLENT
Symmetry	EXCELLENT
Fluorescence	NONE
Inscription(s)	 LG713503621

Comments: This Laboratory Grown Diamond was created by Chemical Vapor Deposition (CVD) growth process.
Type IIa

PROPORTIONS



Sample Image Used

COLOR

D E F G H I J Faint Very Light Light

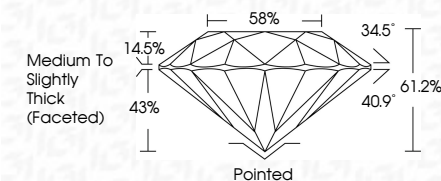
CLARITY

IF	VS ¹⁻²	VS ¹⁻²	SI ¹⁻²	I ¹⁻³
Internally Flawless	Very Very Slightly Included	Very Slightly Included	Slightly Included	Included

LABORATORY GROWN DIAMOND REPORT



June 4, 2025	
IGI Report Number	LG713503621
Description	LABORATORY GROWN DIAMOND
Shape and Cutting Style	ROUND BRILLIANT
Measurements	6.86 - 6.91 X 4.21 MM
GRADING RESULTS	
Carat Weight	1.22 CARAT
Color Grade	D
Clarity Grade	VVS 2
Cut Grade	IDEAL



ADDITIONAL GRADING INFORMATION

Polish	EXCELLENT
Symmetry	EXCELLENT
Fluorescence	NONE
Inscription(s)	LG LG713503621
<p>Comments: This Laboratory Grown Diamond was created by Chemical Vapor Deposition (CVD) growth process.</p> <p>Type Ila</p>	



© IGI 2020, International Gemological Institute

FD - 10 20



THIS DOCUMENT WAS PRODUCED WITH THE FOLLOWING SECURITY MEASURES: SPECIAL DOCUMENT PAPER, INK SCREENS, WATERMARK, BACKGROUND DESIGNS, HOLOGRAM AND OTHER SECURITY FEATURES NOT LISTED AND DO EXCEED DOCUMENT SECURITY INDUSTRY GUIDELINES

www.igi.org

June 4, 2025
GI Report No LG713503621
ROUND BRILLIANT

5.86 - 6.91 X 4.21 MM

3.86 - 6.91 X 4.21 MM
Carat Weight 1.22 CARAT

Catalytic Weight %	Color Grade	D
1.22	1.22	1.22

Clarity Grade	WS 2
---------------	------

Quality Grade	VS2	IDEAL
Cut Grade		

Depth	61.2%
-------	-------

Table	58%
Girdle	

Girdle

	Pointed	Culet
11 mm x 4 mm		

Cut	Pointed
Polish	EXCELLENT

Symmetry

Fluorescence	NONE
Inscription(s)	1811 G713503621

Inscription(s) LG713503621

Comments:
This Laboratory Grown Diamond was

**This Laboratory Grown Diamond was
Created by Chemical Vapor Deposition**

(CVD) growth process, type IIa

Open