

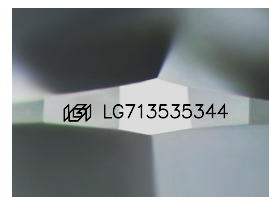
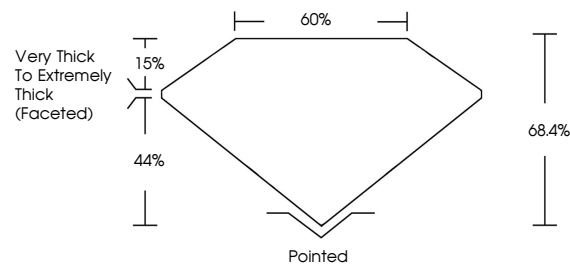


**ELECTRONIC COPY**

## LABORATORY GROWN DIAMOND REPORT

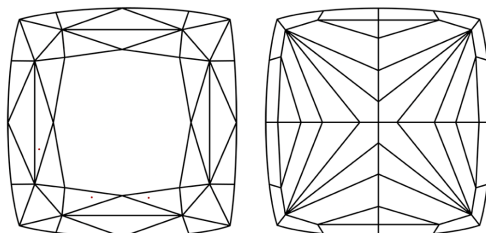
LG713535344  
Report verification at [lgi.org](https://lgi.org)

## PROPORTIONS



Sample Image Used

## CLARITY CHARACTERISTICS



## KEY TO SYMBOLS

Red symbols indicate internal characteristics.  
Green symbols indicate external characteristics.

## COLOR

D E F G H I J Faint Very Light Light

## CLARITY

IF      WS<sup>1-2</sup>      VS<sup>1-2</sup>      SI<sup>1-2</sup>      I<sup>1-3</sup>

Internally Flawless	Very Very Slightly Included	Very Slightly Included	Slightly Included	Included
------------------------	--------------------------------	---------------------------	----------------------	----------

## LABORATORY GROWN DIAMOND REPORT



June 18, 2025

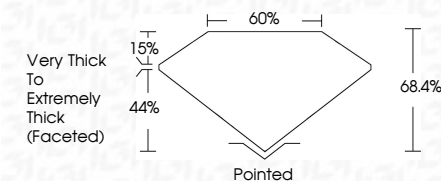
IGI Report Number **LG713535344**Description **LABORATORY GROWN DIAMOND**

Shape and Cutting Style **SQUARE CUSHION MODIFIED  
BRILLIANT**

Measurements **6.94 X 6.81 X 4.66 MM**

## GRADING RESULTS

Carat Weight **2.08 CARATS**

Color Grade **FANCY INTENSE GREEN**Clarity Grade VVS 2

### ADDITIONAL GRADING INFORMATION

Polish **EXCELLENT**Symmetry **EXCELLENT**Fluorescence **NONE**Inscription(s)  LG713535344

Comments: This Laboratory Grown Diamond was created by Chemical Vapor Deposition (CVD) growth process.

Indications of post-growth treatment.



IG



© IGI 2020, International Gemological Institute

FD - 10 20

**www.igi.org**

THIS DOCUMENT WAS PRODUCED WITH THE FOLLOWING SECURITY MEASURES: SPECIAL DOCUMENT PAPER, INK SCREENS, WATERMARK, BACKGROUND DESIGNS, HOLOGRAM AND OTHER SECURITY FEATURES NOT LISTED AND DO EXCEED DOCUMENT SECURITY INDUSTRY GUIDELINES

June 18, 2025	IGI Report No. LG713535344		SQUARE CLASHION MODIFIED BRILLIANT	
		6.94 X 6.81 X 4.65 MM	2.06 CARATS	
Carat Weight	Color Grade	FANCY INTENSE GREEN	VVS 2	
Clarity Grade	Depth	68.4%	60%	
Table	Girdle	Very Thick to Extremely Thick (faceted)		
Quiet	Polish	Excellent	Excellent	
Symmetry	Fluorescence	Excellent	None	
Inscription(s)		IGI LG713535344		
Comments:				
This is a Chemically Grown Diamond was created by Chemical Vapor Deposition (CVD) growth process.				
Indications of post-growth treatment.				