

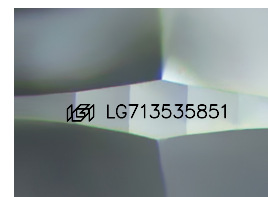
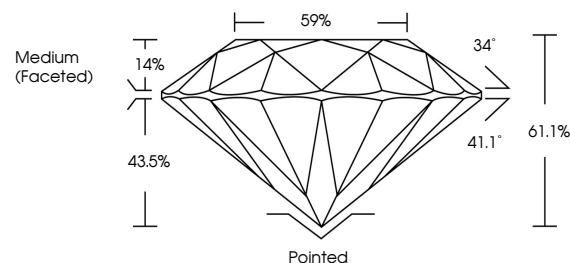


**ELECTRONIC COPY**

## LABORATORY GROWN DIAMOND REPORT

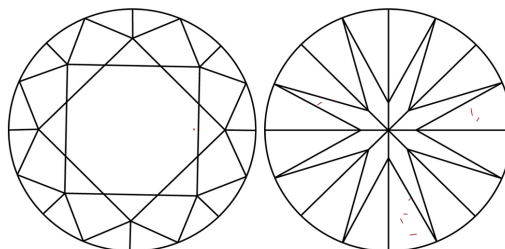
LG713535851  
Report verification at [iqi.org](https://iqi.org)

## PROPORTIONS



Sample Image Used

## CLARITY CHARACTERISTICS



## KEY TO SYMBOLS

Red symbols indicate internal characteristics.  
Green symbols indicate external characteristics.

## COLOR

D E F G H I J Faint Very Light Light

## CLARITY

IF WS<sup>1-2</sup> VS<sup>1-2</sup> SI<sup>1-2</sup> |<sup>1-3</sup>

Internally Flawless	Very Very Slightly Included	Very Slightly Included	Slightly Included	Included
------------------------	--------------------------------	---------------------------	----------------------	----------

## LABORATORY GROWN DIAMOND REPORT



June 16, 2025

IGI Report Number **LG713535851**Description **LABORATORY GROWN DIAMOND**Shape and Cutting Style **ROUND BRILLIANT**

Measurements 10.25 - 10.28 X 6.27 MM

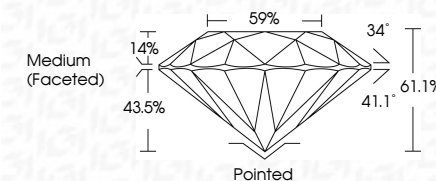
## GRADING RESULTS

Carat Weight **4.05 CARATS**

Color Grade **E**

Clarity Grade VS 1

Cut Grade **IDEAL**



### ADDITIONAL GRADING INFORMATION

Polish **EXCELLENT**Symmetry **EXCELLENT**Fluorescence **NONE**Inscription(s)  LG713535851

Comments: This Laboratory Grown Diamond was created by Chemical Vapor Deposition (CVD) growth process.  
Type IIa



© IGI 2020, International Gemological Institute

FD - 10 20



THIS DOCUMENT WAS PRODUCED WITH THE FOLLOWING SECURITY MEASURES: SPECIAL DOCUMENT PAPER, INK SCREENS, WATERMARK, BACKGROUND DESIGNS, HOLOGRAM AND OTHER SECURITY FEATURES NOT LISTED AND DO EXCEED DOCUMENT SECURITY INDUSTRY GUIDELINES

**www.igi.org**

June 14, 2026	GI Report No. G713535951	4.05 CARATS	E	VS 1	Pointed	Comments: The Laboratory Grown Diamond was created by Chemical Vapor Deposition (CVD) growth process. Type IIA
ROUND BRILLIANT				IDEAL	EXCELLENT	
				61.1%	EXCELLENT	
				59%	NONE	
				Medium (Faceted)	681 LG713535951	
	Carat Weight	10.25 - 10.28 X 6.27 MM				
	Color Grade					
	Clarity Grade					
	Cut Grade					
	Depth					
	Table					
	Girdle					
	Culet					
	Polish					
	Symmetry					
	Fluorescence					
	Inscriptions(s)					