

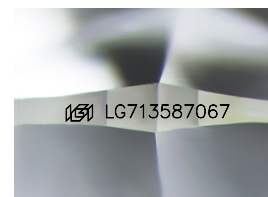
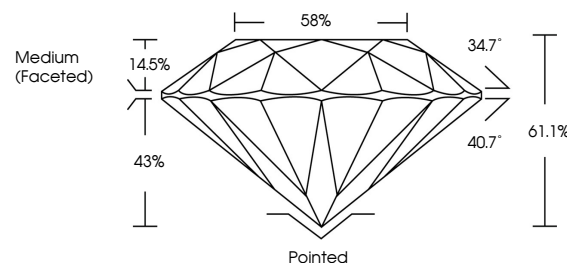


ELECTRONIC COPY

LABORATORY GROWN DIAMOND REPORT

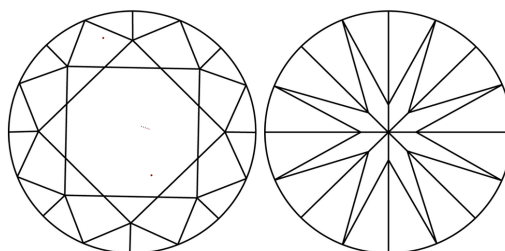
LG713587067
Report verification at iqi.org

PROPORTIONS



Sample Image Used

CLARITY CHARACTERISTICS



KEY TO SYMBOLS

Red symbols indicate internal characteristics.
Green symbols indicate external characteristics.

COLOR

D E F G H I J Faint Very Light Light

CLARITY

IF WS¹⁻² VS¹⁻² SI¹⁻² |¹⁻³

Internally Flawless	Very Very Slightly Included	Very Slightly Included	Slightly Included	Included
------------------------	--------------------------------	---------------------------	----------------------	----------

LABORATORY GROWN DIAMOND REPORT



June 20, 2025

IGI Report Number LG713587067

Description **LABORATORY GROWN DIAMOND**Shape and Cutting Style **ROUND BRILLIANT**

Measurements	11.01 - 11.06 X 6.73 MM
--------------	-------------------------

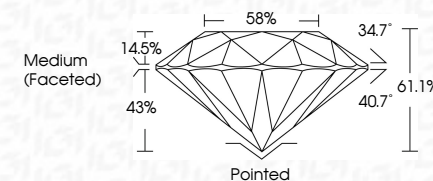
GRADING RESULTS

Carat Weight **5.04 CARATS**

Color Grade

Clarity Grade VVS 2

Cut Grade **IDEAL**



ADDITIONAL GRADING INFORMATION

Polish **EXCELLENT**

Symmetry **EXCELLENT**

Fluorescence **NONE**Inscription(s) LG713587067

Comments: This Laboratory Grown Diamond was created by Chemical Vapor Deposition (CVD) growth process.
Type IIa



© IGI 2020, International Gemological Institute

FD - 10 20

www.igi.org



THIS DOCUMENT WAS PRODUCED WITH THE FOLLOWING SECURITY MEASURES: SPECIAL DOCUMENT PAPER, INK SCREENS, WATERMARK, BACKGROUND DESIGNS, HOLOGRAM AND OTHER SECURITY FEATURES NOT LISTED AND DO EXCEED DOCUMENT SECURITY INDUSTRY GUIDELINES

June 20, 2025	
GI Report No. LG713897067	
ROUND BRILLIANT	
5.04 CARATS	F
VVS 2	IDEAL
61.1%	58%
Medium (Faceted)	
Pointed	
EXCELLENT	
EXCELLENT	
NONE	
lg713897067	
Comments:	
The Laboratory Grown Diamond was found to have no detectable optical features from a standard diamond growth process.	
Type IIa	