

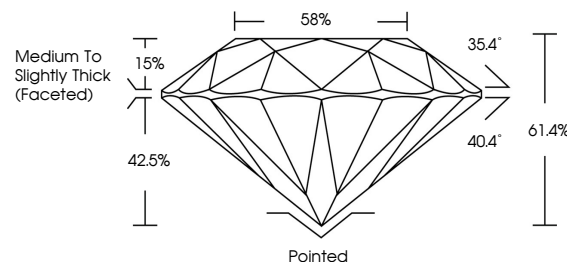


**ELECTRONIC COPY**

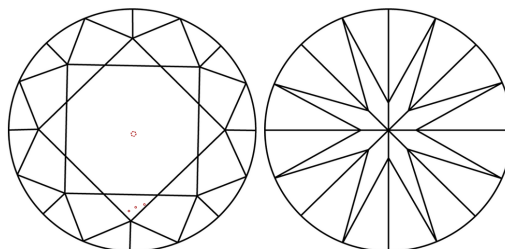
## LABORATORY GROWN DIAMOND REPORT

LG714503504  
Report verification at [lgi.org](https://lgi.org)

## PROPORTIONS



## CLARITY CHARACTERISTICS



## KEY TO SYMBOLS

Red symbols indicate internal characteristics.  
Green symbols indicate external characteristics.

## COLOR

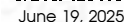
D E F G H I J Faint Very Light Light

## CLARITY

IF WS<sup>1-2</sup> VS<sup>1-2</sup> SI<sup>1-2</sup> |<sup>1-3</sup>

Internally Flawless	Very Very Slightly Included	Very Slightly Included	Slightly Included	Included
------------------------	--------------------------------	---------------------------	----------------------	----------

## LABORATORY GROWN DIAMOND REPORT

IGI Report Number **LG714503504**Description **LABORATORY GROWN DIAMOND**Shape and Cutting Style **ROUND BRILLIANT**

Measurements 6.46 - 6.51 X 3.98 MM

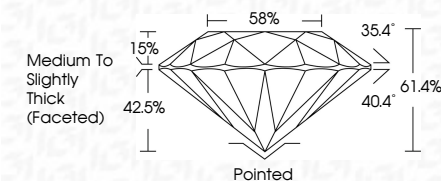
## GRADING RESULTS

Carat Weight 1.03 CARAT

Color Grade D

Clarity Grade VS 1

Cut Grade **IDEAL**



### ADDITIONAL GRADING INFORMATION

Polish **EXCELLENT**Symmetry **EXCELLENT**Fluorescence **NONE**Inscription(s)  LG714503504

Comments: As Grown - No indication of post-growth treatment.

This Laboratory Grown Diamond was created by High Pressure High Temperature (HPHT) growth process.  
Type II



© IGI 2020, International Gemological Institute

FD - 10 20

**www.igi.org**



THIS DOCUMENT WAS PRODUCED WITH THE FOLLOWING SECURITY MEASURES: SPECIAL DOCUMENT PAPER, INK SCREENS, WATERMARK, BACKGROUND DESIGNS, HOLOGRAM AND OTHER SECURITY FEATURES NOT LISTED AND DO EXCEED DOCUMENT SECURITY INDUSTRY GUIDELINES

<b>June 19, 2025</b>	<b>G Report No LG714603904</b>	<b>1.03 CARAT</b>	<b>D</b>	<b>VSI 1</b>	<b>IDEAL</b>	<b>61.4%</b>	<b>86%</b>	<b>Medium To Slightly Thick (Faceted)</b>	<b>Patched</b>	<b>EXCELLENT</b>	<b>EXCELLENT</b>	<b>NONE</b>	<b>(#) LG714603904</b>
<b>ROUND BRILLIANT</b>	<b>Color Grade</b>	<b>Clarity Grade</b>	<b>Cut Grade</b>	<b>Depth</b>	<b>Table</b>	<b>Girdle</b>	<b>Culet</b>	<b>Symmetry</b>	<b>Fluorescence</b>	<b>Treatments(s)</b>	<b>Comments:</b>	<b>As Grown - No Indication of post-growth treatment.</b>	
	<b>I-4.5 - 4.6 J X 3.8 MM</b>	<b>Very Good</b>	<b>Very Good</b>	<b>Good</b>	<b>Excellent</b>	<b>Excellent</b>	<b>None</b>	<b>Excellent</b>	<b>None</b>	<b>This Laboratory Grown Diamond was created by High Pressure High Temperature (HPHT) growth process.</b>	<b>Type IIa</b>		