

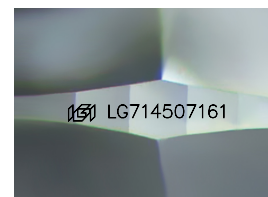
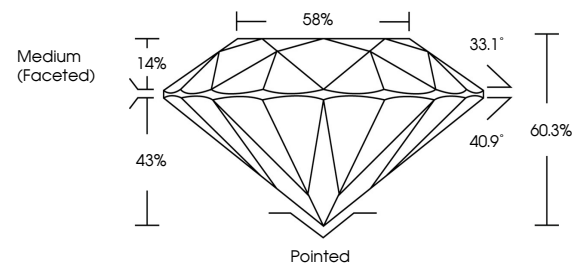


ELECTRONIC COPY

LABORATORY GROWN DIAMOND REPORT

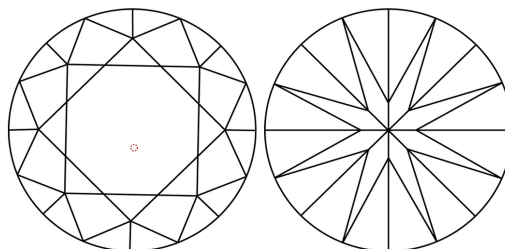
LG714507161
Report verification at igi.org

PROPORTIONS



Sample Image Used

CLARITY CHARACTERISTICS



KEY TO SYMBOLS

Red symbols indicate internal characteristics.
Green symbols indicate external characteristics.

COLOR

D E F G H I J Faint Very Light Light

CLARITY

IF WS¹⁻² VS¹⁻² SI¹⁻² |¹⁻³

Internally Flawless	Very Very Slightly Included	Very Slightly Included	Slightly Included	Included
------------------------	--------------------------------	---------------------------	----------------------	----------

LABORATORY GROWN DIAMOND REPORT



June 21, 2025

IGI Report Number **LG714507161**Description **LABORATORY GROWN DIAMOND**Shape and Cutting Style **ROUND BRILLIANT**

Measurements 8.26 - 8.31 X 5.00 MM

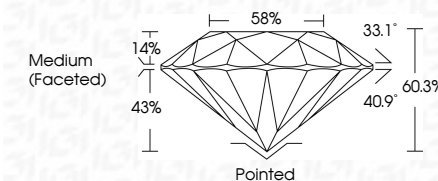
GRADING RESULTS

Carat Weight **2.09 CARATS**

Color Grade **E**

Clarity Grade VS 1

Cut Grade **IDEAL**



ADDITIONAL GRADING INFORMATION

Polish EXCELLENT

Symmetry **EXCELLENT**Fluorescence **NONE**Inscription(s) LG714507161

Comments: This Laboratory Grown Diamond was created by Chemical Vapor Deposition (CVD) growth process.
Type IIa



© IGI 2020, International Gemological Institute

FD - 10 20

www.igi.org



THIS DOCUMENT WAS PRODUCED WITH THE FOLLOWING SECURITY MEASURES: SPECIAL DOCUMENT PAPER, INK SCREENS, WATERMARK, BACKGROUND DESIGNS, HOLOGRAM AND OTHER SECURITY FEATURES NOT LISTED AND DO EXCEED DOCUMENT SECURITY INDUSTRY GUIDELINE

June 21, 2026	2.09 CARATS	VS 1	Pointed	Comments: The Laboratory Grown Diamond was found to be a natural type IIA CVD growth process.
GJ Report No. G774507/161	E	IDEAL	EXCELLENT	
ROUND BRILLIANT		60.3%	EXCELLENT	
		58%	NONE	
		Medium (Faceted)	169 LG774507/161	
	Carat Weight	Clarity Grade	Cut Grade	Color
		Depth	Table	
		Girdle		
			Culet	
			Polish	
			Symmetry	
			Fluorescence	
			Inscriptions(s)	