



**ELECTRONIC COPY**

## LABORATORY GROWN DIAMOND REPORT

June 20, 2025	
IGI Report Number	LG714507489
Description	LABORATORY GROWN DIAMOND
Shape and Cutting Style	ROUND BRILLIANT
Measurements	7.41 - 7.47 X 4.61 MM

## GRADING RESULTS

Carat Weight	1.59 CARAT
Color Grade	F
Clarity Grade	VVS 2
Cut Grade	IDEAL

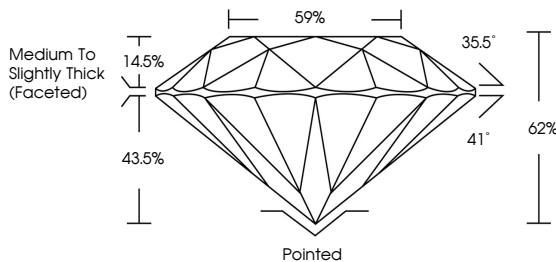
### ADDITIONAL GRADING INFORMATION

Polish	EXCELLENT
Symmetry	EXCELLENT
Fluorescence	NONE
Inscription(s)	 LG714507489

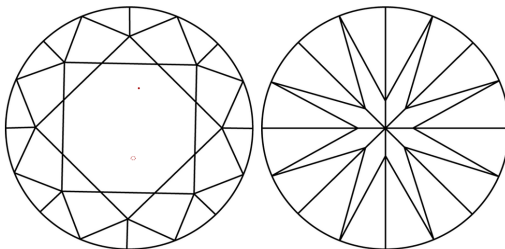
Comments: This Laboratory Grown Diamond was created by Chemical Vapor Deposition (CVD) growth process.  
Type IIa

LG714507489  
Report verification at [igi.org](https://igi.org)

## PROPORTIONS

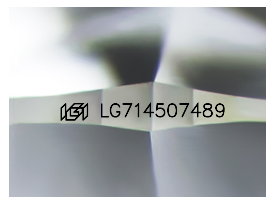


## CLARITY CHARACTERISTICS



## KEY TO SYMBOLS

Red symbols indicate internal characteristics.  
Green symbols indicate external characteristics.



Sample Image Used

**COLOR**

D E F G H I J Faint Very Light Light

## CLARITY

IF VS<sup>1-2</sup> VS<sup>1-2</sup> S<sup>1-2</sup> 1-3

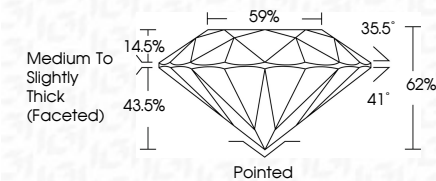
Internally Flawless	Very Very Slightly Included	Very Slightly Included	Slightly Included	Included
------------------------	--------------------------------	---------------------------	----------------------	----------



June 20, 2025	
IGI Report Number	LG714507489
Description	LABORATORY GROWN DIAMOND
Shape and Cutting Style	ROUND BRILLIANT
Measurements	7.41 - 7.47 X 4.61 MM

## GRADING RESULTS

Carat Weight	1.59 CARAT
Color Grade	F
Clarity Grade	VVS 2
Cut Grade	IDEAL



### ADDITIONAL GRADING INFORMATION

Polish	EXCELLENT
Symmetry	EXCELLENT
Fluorescence	NONE
Inscription(s)	 LG714507489
Comments: This Laboratory Grown Diamond was created by Chemical Vapor Deposition (CVD) growth process.	
Type IIa	



IG



© IGI 2020, International Gemological Institute

FD - 10 20



THIS DOCUMENT WAS PRODUCED WITH THE FOLLOWING SECURITY MEASURES: SPECIAL DOCUMENT PAPER, INK SCREENS, WATERMARK BACKGROUND DESIGNS, HOLOGRAM AND OTHER SECURITY FEATURES NOT LISTED AND DO EXCEED DOCUMENT SECURITY INDUSTRY GUIDELINES

**www.igi.org**

June 20, 2025  
IGI Report No LG714507489  
ROUND BRILLIANT

7.41 - 7.47 X 4.61 MM	1.59 CARAT	F
Color Grade	VVS 2	IDEAL
Clarity Grade	62%	59%
Cut Grade	Medium to slightly Thick (faceted)	
Depth	Pointed	
Table	EXCELLENT	
Girdle	EXCELLENT	
Culet	NONE	
Polish	NONE	
Symmetry	NONE	
Fluorescence	NONE	
Measurements	4.61 X 7.41 X 4.62 MM	

**Comments:**  
This Laboratory Grown Diamond was created by Chemical Vapor Deposition (CVD) growth process.