

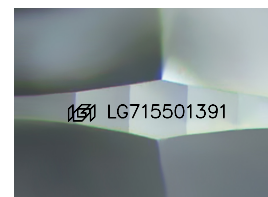
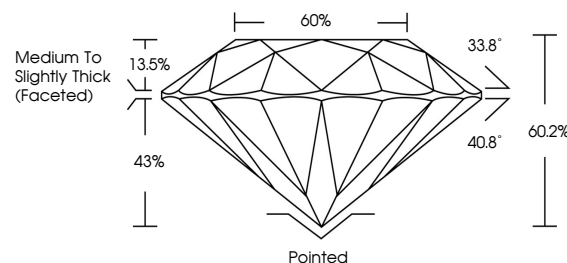


ELECTRONIC COPY

LABORATORY GROWN DIAMOND REPORT

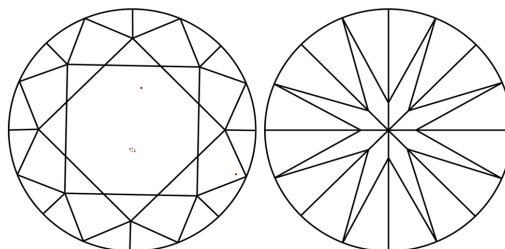
LG715501391
Report verification at iqi.org

PROPORTIONS



Sample Image Used

CLARITY CHARACTERISTICS



KEY TO SYMBOLS

Red symbols indicate internal characteristics.
Green symbols indicate external characteristics.

COLOR

D E F G H I J Faint Very Light Light

CLARITY

IF WS¹⁻² VS¹⁻² SI¹⁻² |¹⁻³

Internally Flawless	Very Very Slightly Included	Very Slightly Included	Slightly Included	Included
------------------------	--------------------------------	---------------------------	----------------------	----------

LABORATORY GROWN DIAMOND REPORT



June 12, 2025

IGI Report Number **LG715501391**Description **LABORATORY GROWN DIAMOND**Shape and Cutting Style **ROUND BRILLIANT**

Measurements 9.40 - 9.43 X 5.67 MM

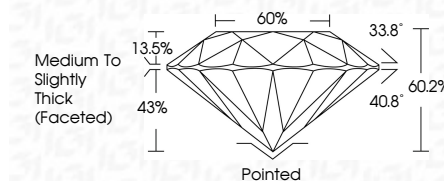
GRADING RESULTS

Carat Weight **3.06 CARATS**

Color Grade F

Clarity Grade VS 1

Cut Grade **IDEAL**



ADDITIONAL GRADING INFORMATION

Polish **EXCELLENT**Symmetry **EXCELLENT**Fluorescence **NONE**Inscription(s) LG715501391

Comments: This Laboratory Grown Diamond was created by Chemical Vapor Deposition (CVD) growth process.
Type IIa



© IGI 2020, International Gemological Institute

FD - 10 20

www.igi.org



THIS DOCUMENT WAS PRODUCED WITH THE FOLLOWING SECURITY MEASURES: SPECIAL DOCUMENT PAPER, INK SCREENS, WATERMARK, BACKGROUND DESIGNS, HOLOGRAM AND OTHER SECURITY FEATURES NOT LISTED AND DO EXCEED DOCUMENT SECURITY INDUSTRY GUIDELINE

June 12, 2005	Carat Weight	3.06 CARATS	VS 1	Pointed	Comments: The Laboratory Grown Diamond was found to be a chemical vapor deposition (CVD) grown process. Type IIa
GI Report No. LG715501391	Color Grade	F	IDEAL	EXCELLENT	
ROUND BRILLIANT	Clarity Grade		60.2%	EXCELLENT	
40-40-40.3 X 6.7 MM	Cut Grade		60%	NONE	
	Depth		Medium to Slightly Thick (focused)	169 LG715501391	
	Table				
	Girdle				
	Culet				
	Polish				
	Symmetry				
	Fluorescence				
	Annotations(s)				