



**ELECTRONIC COPY**

## LABORATORY GROWN DIAMOND REPORT

June 14, 2025	
IGI Report Number	LG715502943
Description	LABORATORY GROWN DIAMOND
Shape and Cutting Style	ROUND BRILLIANT
Measurements	9.24 - 9.30 X 5.73 MM
GRADING RESULTS	
Carat Weight	3.02 CARATS
Color Grade	D
Clarity Grade	INTERNALLY FLAWLESS
Cut Grade	IDEAL

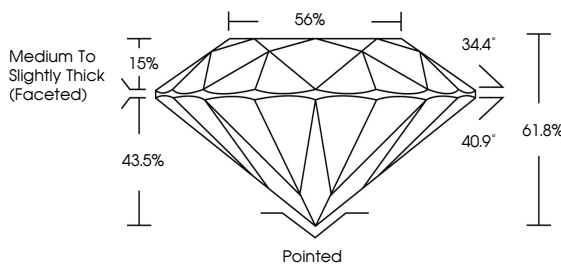
### ADDITIONAL GRADING INFORMATION

Polish	EXCELLENT
Symmetry	EXCELLENT
Fluorescence	NONE
Inscription(s)	 LG715502943

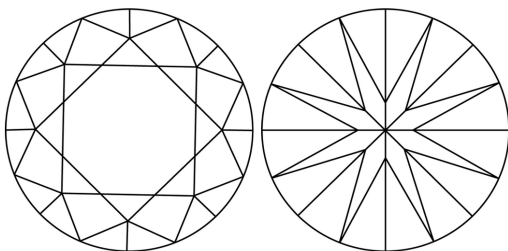
Comments: HEARTS & ARROWS  
As Grown - No indication of post-growth treatment.  
This Laboratory Grown Diamond was created by High  
Pressure High Temperature (HPHT) growth process.  
Type II

LG715502943  
Report verification at [igi.org](https://igi.org)

## PROPORTIONS

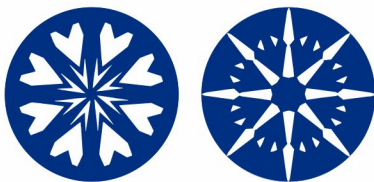


## CLARITY CHARACTERISTICS

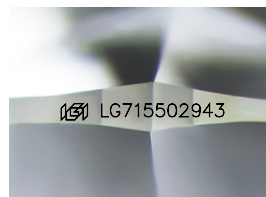


## KEY TO SYMBOLS

Red symbols indicate internal characteristics.  
Green symbols indicate external characteristics.



**www.igi.org**



Sample Image Used

## COLOR

D E F G H I J Faint Very Light Light

## CLARITY

IF VWS<sup>1-2</sup> VS<sup>1-2</sup> SI<sup>1-2</sup> |<sup>1-3</sup>

Internally Flawless	Very Very Slightly Included	Very Slightly Included	Slightly Included	Included
------------------------	--------------------------------	---------------------------	----------------------	----------



© IGI 2020, International Gemological Institute

FD - 10 20

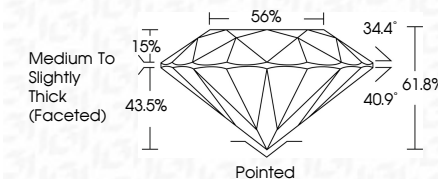


THIS DOCUMENT WAS PRODUCED WITH THE FOLLOWING SECURITY MEASURES: SPECIAL DOCUMENT PAPER, INK SCREENS, WATERMARK BACKGROUND DESIGNS, HOLOGRAM AND OTHER SECURITY FEATURES NOT LISTED AND DO EXCEED DOCUMENT SECURITY INDUSTRY GUIDELINES

## LABORATORY GROWN DIAMOND REPORT



June 14, 2025	
IGI Report Number	LG715502943
Description	LABORATORY GROWN DIAMOND
Shape and Cutting Style	ROUND BRILLIANT
Measurements	9.24 - 9.30 X 5.73 MM
GRADING RESULTS	
Carat Weight	3.02 CARATS
Color Grade	D
Clarity Grade	INTERNALLY FLAWLESS
Cut Grade	IDEAL



### ADDITIONAL GRADING INFORMATION

Polish	EXCELLENT
Symmetry	EXCELLENT
Fluorescence	NONE
Inscription(s)	 LG7155002943
Comments: HEARTS & ARROWS	
As Grown - No indication of post-growth treatment.	
This Laboratory Grown Diamond was created by High Pressure High Temperature (HPHT) growth process.	
Type II	



IG

June 14, 2025  
IGI Report No LG715502943  
ROUND BRILLIANT

9.24 - 9.30 X 5.73 MM	3.02 CARATS	D	IF	IDEAL	61.65%	56%	Medium to slightly Thick (faceted)	Pointed	EXCELLENT	EXCELLENT	NONE	4mm (1.71 to 1.82 mm)
Carat Weight		Color Grade	Clarity Grade	Cut Grade	Depth	Table	Girdle	Culet	Polish	Symmetry	Fluorescence	Measurements

Comments:  
HEARTS & ARROWS  
As Grown - No Indication of post-growth  
treatment  
This Laboratory Grown Diamond was  
credited by High Pressure High  
Temperature (HPHT) growth process.