

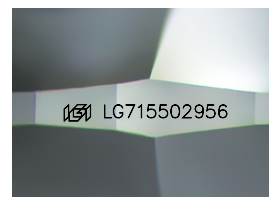
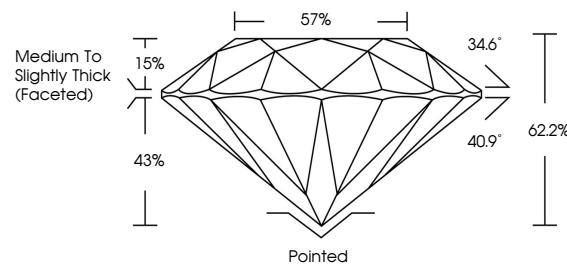


ELECTRONIC COPY

LABORATORY GROWN DIAMOND REPORT

LG715502956
Report verification at igi.org

PROPORTIONS



Sample Image Used

CLARITY CHARACTERISTICS



KEY TO SYMBOLS

Red symbols indicate internal characteristics.
Green symbols indicate external characteristics.



www.igi.org

LABORATORY GROWN DIAMOND REPORT



June 14, 2025

IGI Report Number **LG715502956**Description **LABORATORY GROWN DIAMOND**Shape and Cutting Style **ROUND BRILLIANT**

Measurements 9.90 - 9.95 X 6.17 MM

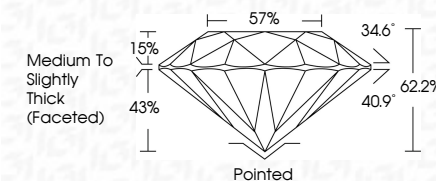
GRADING RESULTS

Carat Weight **3.76 CARATS**

Color Grade D

Clarity Grade **INTERNALLY FLAWLESS**

Cut Grade **IDEAL**



ADDITIONAL GRADING INFORMATION

Polish **EXCELLENT**Symmetry **EXCELLENT**Fluorescence **NONE**Inscription(s) LG715502956

Comments: HEARTS & ARROWS

As Grown - No indication of post-growth treatment.

This Laboratory Grown Diamond was created by High Pressure High Temperature (HPHT) growth process.

Type II



IG

June 14, 2025	3.76 CARATS
GI Report No. G5715002966	Color Grade
ROUND BRILLIANT	Clarity Grade
9.90 - 9.95 X 6.17 MM	Depth
	Table
	Girdle
	Culet
	Polish
	Symmetry
	Fluorescence
	Inscriptions
	None
	As Grown - No indication of post-growth treatment.
	This Laboratory Grown Diamond was produced by a High Pressure High Temperature (HPHT) growth process. (Type II)

© IGI 2020, International Gemological Institute

FD - 10 20



THIS DOCUMENT WAS PRODUCED WITH THE FOLLOWING SECURITY MEASURES: SPECIAL DOCUMENT PAPER, INK SCREENS, WATERMARK, BACKGROUND DESIGNS, HOLOGRAM AND OTHER SECURITY FEATURES NOT LISTED AND DO EXCEED DOCUMENT SECURITY INDUSTRY GUIDELINES