

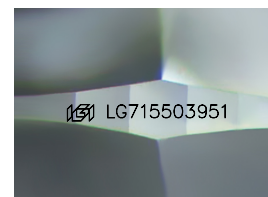
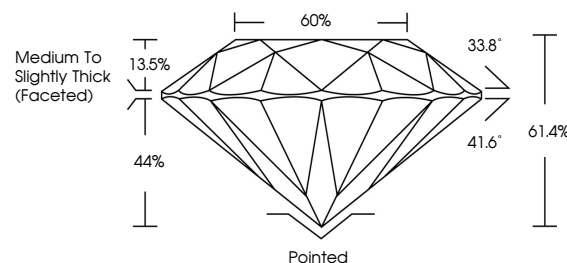


ELECTRONIC COPY

LABORATORY GROWN DIAMOND REPORT

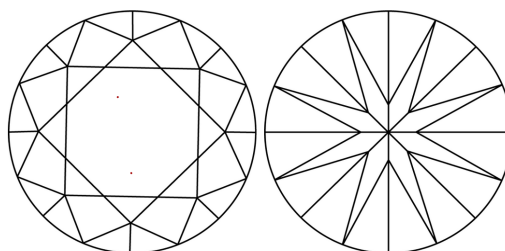
LG715503951
Report verification at iqi.org

PROPORTIONS



Sample Image Used

CLARITY CHARACTERISTICS



KEY TO SYMBOLS

Red symbols indicate internal characteristics.
Green symbols indicate external characteristics.

COLOR

D E F G H I J Faint Very Light Light

CLARITY

IF WS¹⁻² VS¹⁻² SI¹⁻² |¹⁻³

Internally Flawless	Very Very Slightly Included	Very Slightly Included	Slightly Included	Included
------------------------	--------------------------------	---------------------------	----------------------	----------



June 13, 2025

IGI Report Number LG715503951

Description **LABORATORY GROWN DIAMOND**Shape and Cutting Style **ROUND BRILLIANT**

Measurements 9.32 - 9.37 X 5.74 MM

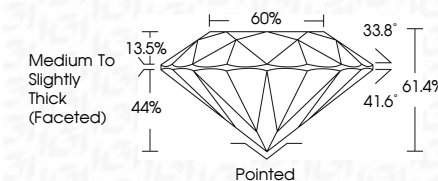
GRADING RESULTS

Carat Weight **3.06 CARATS**

Color Grade

Clarity Grade WS 2

Cut Grade **IDEAL**



ADDITIONAL GRADING INFORMATION

Polish EXCELLENT

Symmetry **EXCELLENT**Fluorescence **NONE**Inscription(s) LG715503951

Comments: This Laboratory Grown Diamond was created by Chemical Vapor Deposition (CVD) growth process.
Type IIa



© IGI 2020, International Gemological Institute

FD - 10 20



THIS DOCUMENT WAS PRODUCED WITH THE FOLLOWING SECURITY MEASURES: SPECIAL DOCUMENT PAPER, INK SCREENS, WATERMARK, BACKGROUND DESIGNS, HOLOGRAM AND OTHER SECURITY FEATURES NOT LISTED AND DO EXCEED DOCUMENT SECURITY INDUSTRY GUIDELINES

www.igi.org

June 13, 2026	GI Report No.G771503091	
ROUND BRILLIANT		
	3.06 CARATS	
	E	
	VVS 2	
	IDEAL	
	61.4%	
	60%	
	Medium to Slightly	
	Med (Faceted)	
	Pointed	
	EXCELLENT	
	EXCELLENT	
	NONE	
	1691671503091	
Comments:		
	The Laboratory Crown Diamond was	
	found to be a natural report Deposition	
	(CVD) growth process.	
	Type Iia	