

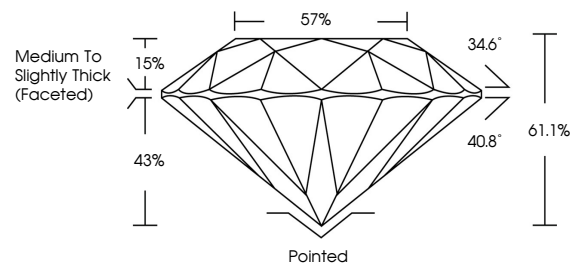


ELECTRONIC COPY

LABORATORY GROWN DIAMOND REPORT

LG715505897
Report verification at igi.org

PROPORTIONS



CLARITY CHARACTERISTICS



KEY TO SYMBOLS

Red symbols indicate internal characteristics.
Green symbols indicate external characteristics.

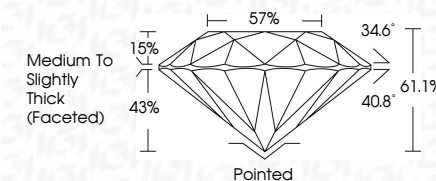


www.igi.org

LABORATORY GROWN DIAMOND REPORT



| | |
|-------------------------|--------------------------|
| June 11, 2025 | |
| IGI Report Number | LG715505897 |
| Description | LABORATORY GROWN DIAMOND |
| Shape and Cutting Style | ROUND BRILLIANT |
| Measurements | 7.46 - 7.50 X 4.57 MM |
| GRADING RESULTS | |
| Carat Weight | 1.56 CARAT |
| Color Grade | D |
| Clarity Grade | INTERNALLY FLAWLESS |
| Cut Grade | IDEAL |



ADDITIONAL GRADING INFORMATION

| | |
|--|---|
| Polish | EXCELLENT |
| Symmetry | EXCELLENT |
| Fluorescence | NONE |
| Inscription(s) |  LG715505897 |
| Comments: HEARTS & ARROWS | |
| As Grown - No indication of post-growth treatment. | |
| This Laboratory Grown Diamond was created by High Pressure High Temperature (HPHT) growth process. | |
| Type II | |



IG

© IGI 2020, International Gemological Institute

FD - 10 20



THIS DOCUMENT WAS PRODUCED WITH THE FOLLOWING SECURITY MEASURES: SPECIAL DOCUMENT PAPER, INK SCREENS, WATERMARK, BACKGROUND DESIGNS, HOLOGRAM AND OTHER SECURITY FEATURES NOT LISTED AND DO EXCEED DOCUMENT SECURITY INDUSTRY GUIDELINES

June 11, 2025
GI Report No LG715505897
ROUND BRILLIANT

| | | |
|----------------------|---------------|------------------------------------|
| 46 - 47.50 X 4.57 MM | Carat Weight | 1.56 CARAT |
| | Color Grade | D |
| | Clarity Grade | IF |
| | Cut Grade | IDEAL |
| | Depth | 61.1% |
| | Table | 57% |
| | Grade | Medium to Slightly Thick (Faceted) |
| | Culet | Pointed |
| | Polish | EXCELLENT |
| | Symmetry | EXCELLENT |
| | Fluorescence | NONE |
| | Reference No. | 4641 (2715058902) |

Comments:
HEARTS & ARROWS
As Grown - No indication of post-growth treatment.
This Laboratory Grown Diamond was created by High Pressure High temperature (HPHT) growth process.