

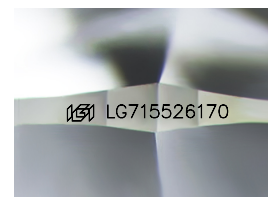
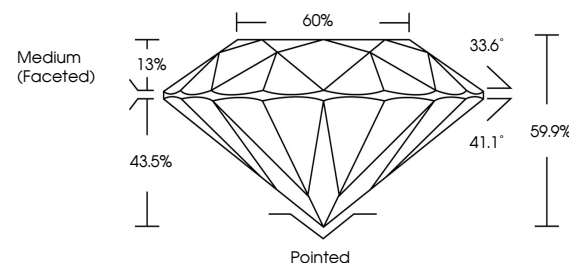


**ELECTRONIC COPY**

## LABORATORY GROWN DIAMOND REPORT

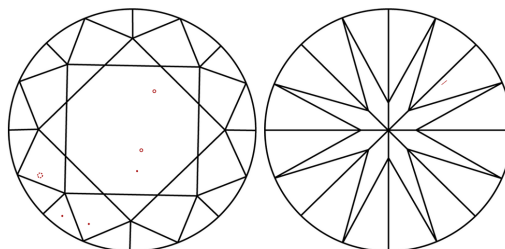
LG715526170  
Report verification at [igi.org](https://igi.org)

## PROPORTIONS



Sample Image Used

## CLARITY CHARACTERISTICS



### KEY TO SYMBOLS

Red symbols indicate internal characteristics.  
Green symbols indicate external characteristics.

## COLOR

D E F G H I J Faint Very Light Light

## CLARITY

IF WS<sup>1-2</sup> VS<sup>1-2</sup> SI<sup>1-2</sup> |<sup>1-3</sup>

Internally Flawless	Very Very Slightly Included	Very Slightly Included	Slightly Included	Included
------------------------	--------------------------------	---------------------------	----------------------	----------



June 11, 2025

IGI Report Number **LG715526170**Description **LABORATORY GROWN DIAMOND**Shape and Cutting Style **ROUND BRILLIANT**

Measurements 10.19 - 10.23 X 6.12 MM

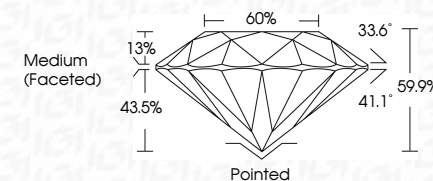
## GRADING RESULTS

Carat Weight **3.85 CARATS**

Color Grade G

Clarity Grade VS 2

Cut Grade **IDEAL**



### ADDITIONAL GRADING INFORMATION

Polish **EXCELLENT**Symmetry **EXCELLENT**Fluorescence **NONE**Inscription(s)  LG715526170

Comments: This Laboratory Grown Diamond was created by Chemical Vapor Deposition (CVD) growth process.  
Type IIa



© IGI 2020, International Gemological Institute

FD - 10 20

**www.igi.org**

THIS DOCUMENT WAS PRODUCED WITH THE FOLLOWING SECURITY MEASURES: SPECIAL DOCUMENT PAPER, INK SCREENS, WATERMARK BACKGROUND DESIGNS, HOLOGRAM AND OTHER SECURITY FEATURES NOT LISTED AND DO EXCEED DOCUMENT SECURITY INDUSTRY GUIDELINES

June 11, 2026	G1 Report No. L671 5526/170		3.85 CARATS		G		V6 2		IDEAL		56.9%		0.0%		Medium (Faceted)		Painted		EXCELLENT		NONE		(69) L671 5526/170		Compare to:							
YOUNG BRILLIANT			10.19 - 10.23 X 6.12 MM		Carat Weight		Color Grade		Clarity Grade		Cut Grade		Depth		Table		Girdle		Culet		Polish		Symmetry		Fluorescence		Fluorescence(s)		Laboratory Grown Diamond was created by Chemical Vapor Deposition (CVD) growth process.		type Ila	