

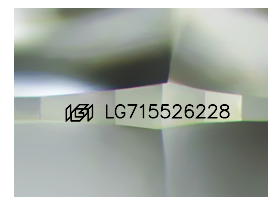
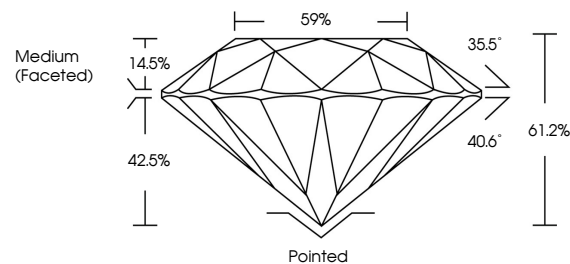


ELECTRONIC COPY

LABORATORY GROWN DIAMOND REPORT

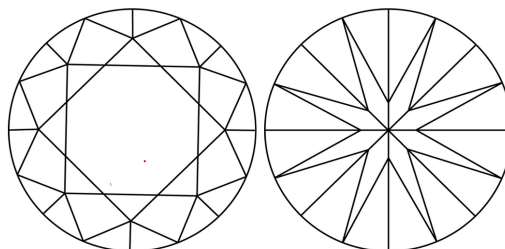
LG715526228
Report verification at igi.org

PROPORTIONS



Sample Image Used

CLARITY CHARACTERISTICS



KEY TO SYMBOLS

Red symbols indicate internal characteristics.
Green symbols indicate external characteristics.

COLOR

D E F G H I J Faint Very Light Light

CLARITY

IF WS¹⁻² VS¹⁻² SI¹⁻² |¹⁻³

Internally Flawless	Very Very Slightly Included	Very Slightly Included	Slightly Included	Included
------------------------	--------------------------------	---------------------------	----------------------	----------

LABORATORY GROWN DIAMOND REPORT



June 11, 2025

IGI Report Number **LG715526228**Description **LABORATORY GROWN DIAMOND**Shape and Cutting Style **ROUND BRILLIANT**

Measurements 8.15 - 8.20 X 5.00 MM

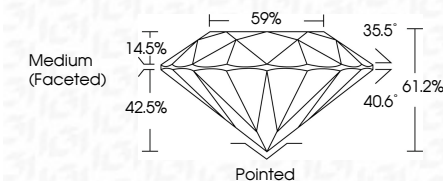
GRADING RESULTS

Carat Weight **2.08 CARATS**

Color Grade F

Clarity Grade **VVS 2**

Cut Grade **IDEAL**



ADDITIONAL GRADING INFORMATION

Polish EXCELLENT

Symmetry **EXCELLENT**Fluorescence **NONE**Inscription(s) LG715526228

Comments: This Laboratory Grown Diamond was created by Chemical Vapor Deposition (CVD) growth process.

Type IIa



© IGI 2020, International Gemological Institute

FD - 10 20

www.igi.org



THIS DOCUMENT WAS PRODUCED WITH THE FOLLOWING SECURITY MEASURES: SPECIAL DOCUMENT PAPER, INK SCREENS, WATERMARK, BACKGROUND DESIGNS, HOLOGRAM AND OTHER SECURITY FEATURES NOT LISTED AND DO EXCEED DOCUMENT SECURITY INDUSTRY GUIDELINES

June 11, 2026	GI Report No LG715502228	ROUND BRILLIANT	1.00 - 1.02 x 5.00 MM	2.08 CARATS	F	WS 2	WS 2	100%	59%	Medium (Faceted)	Pointed	Excellent	Excellent	NONE	169 LG715502228	Comments: Grown Diamond was treated by Chemical Vapor Deposition (CVD) growth process. Type IIa
					Color Grade	Clarity Grade	Cut Grade	Depth	Table	Girdle	Quet	Polish	Symmetry	Fluorescence	Inscriptions(s)	