

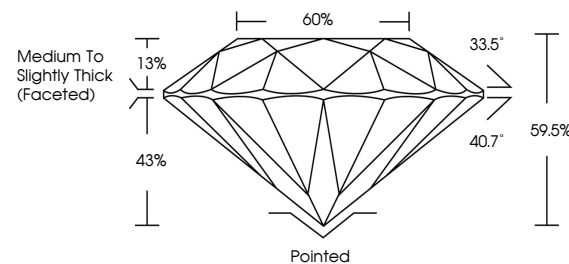


**ELECTRONIC COPY**

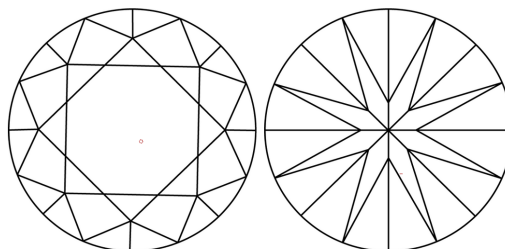
## LABORATORY GROWN DIAMOND REPORT

LG715531223  
Report verification at [igi.org](https://igi.org)

## PROPORTIONS



## CLARITY CHARACTERISTICS



### KEY TO SYMBOLS

Red symbols indicate internal characteristics.  
Green symbols indicate external characteristics.

## COLOR

D E F G H I J Faint Very Light Light

## CLARITY

IF WS<sup>1-2</sup> VS<sup>1-2</sup> S<sup>1-2</sup> |<sup>1-3</sup>

Internally Flawless	Very Very Slightly Included	Very Slightly Included	Slightly Included	Included
------------------------	--------------------------------	---------------------------	----------------------	----------

## LABORATORY GROWN DIAMOND REPORT



June 11, 2025

IGI Report Number **LG715531223**Description **LABORATORY GROWN DIAMOND**Shape and Cutting Style **ROUND BRILLIANT**

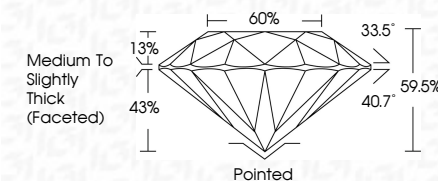
Measurements 7.57 - 7.62 X 4.52 MM

## GRADING RESULTS

Carat Weight 1.58 CARAT

Color Grade **E**Clarity Grade **VVS 2**

Cut Grade **IDEAL**



### ADDITIONAL GRADING INFORMATION

Polish **EXCELLENT**Symmetry **EXCELLENT**Fluorescence **NONE**Inscription(s)  LG715531223

Comments: This Laboratory Grown Diamond was created by Chemical Vapor Deposition (CVD) growth process.  
Type IIa



© IGI 2020, International Gemological Institute

FD - 10 20

**www.igi.org**

THIS DOCUMENT WAS PRODUCED WITH THE FOLLOWING SECURITY MEASURES: SPECIAL DOCUMENT PAPER, INK SCREENS, WATERMARK BACKGROUND DESIGNS, HOLOGRAM AND OTHER SECURITY FEATURES NOT LISTED AND DO EXCEED DOCUMENT SECURITY INDUSTRY GUIDELINES

<b>June 11, 2026</b>	<b>IGI Report No. LG71553 1223</b>	<b>ROUND BRILLANT</b>	<b>1.58 CARAT</b>	<b>VVS 2</b>	<b>IDEAL</b>	<b>59.5%</b>	<b>50%</b>	<b>Medium to Slightly Thick (faceted)</b>	<b>Patched</b>	<b>EXCELLENT</b>	<b>EXCELLENT</b>	<b>NONE</b>	<b>#69 LG71553 1223</b>	<b>Comments:</b> <b>This Laboratory Growth Diamond was created by Chemical Vapor Deposition (CVD) growth process.</b>
			<b>Color Weight</b>	<b>Clarity Grade</b>	<b>Cut Grade</b>	<b>Depth</b>	<b>Table</b>	<b>Girdle</b>	<b>Fluorescence</b>	<b>Symmetry</b>	<b>Inclusions</b>	<b>Typing</b>		
			<b>1.57 - 1.57 - 1.57 x 4.52 mm</b>	<b>Color Grade</b>	<b>Clarity Grade</b>	<b>Cut Grade</b>	<b>Depth</b>	<b>Girdle</b>	<b>Fluorescence</b>	<b>Symmetry</b>	<b>Inclusions</b>	<b>Type IIA</b>		