

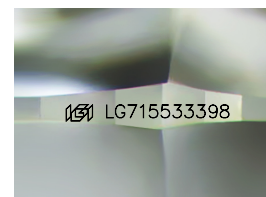
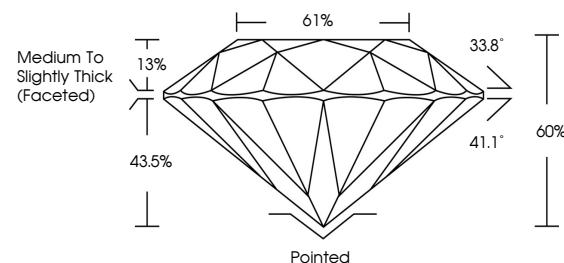


**ELECTRONIC COPY**

## LABORATORY GROWN DIAMOND REPORT

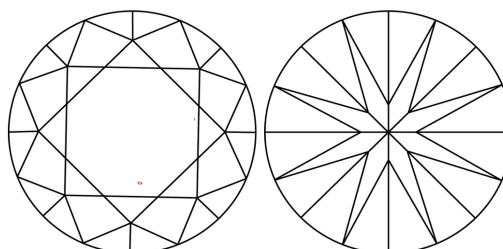
LG715533398  
Report verification at [igi.org](https://igi.org)

## PROPORTIONS



Sample Image Used

## CLARITY CHARACTERISTICS



## KEY TO SYMBOLS

Red symbols indicate internal characteristics.  
Green symbols indicate external characteristics.

## COLOR

D E F G H I J Faint Very Light Light

## CLARITY

IF WS<sup>1-2</sup> VS<sup>1-2</sup> SI<sup>1-2</sup> |<sup>1-3</sup>

Internally Flawless	Very Very Slightly Included	Very Slightly Included	Slightly Included	Included
------------------------	--------------------------------	---------------------------	----------------------	----------



© IGI 2020, International Gemological Institute

FD - 10 20

**www.igi.org**

## LABORATORY GROWN DIAMOND REPORT



June 13, 2025

IGI Report Number LG715533398

Description **LABORATORY GROWN DIAMOND**Shape and Cutting Style **ROUND BRILLIANT**

Measurements 10.31 - 10.34 X 6.20 MM

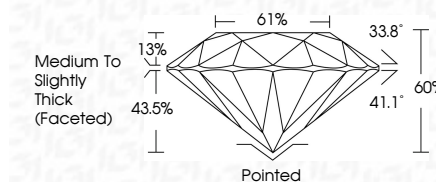
## GRADING RESULTS

Carat Weight **4.03 CARATS**

Color Grade

Clarity Grade VS 1

Cut Grade **EXCELLENT**



### ADDITIONAL GRADING INFORMATION

Polish **EXCELLENT**Symmetry **EXCELLENT**Fluorescence **NONE**Inscription(s)  LG715533398

Comments: This Laboratory Grown Diamond was created by Chemical Vapor Deposition (CVD) growth process.  
Type IIa



June 13, 2026	Carat Weight	4.03 CARATS
GI Report No. G71553398	Color Grade	D
ROUND BRILLIANT	Clarity Grade	VS 1
	Depth	EXCELLENT
	Table	60%
	Girdle	Medium to Slightly Thick (graded)
	Culet	Pointed
	Polish	EXCELLENT
	Symmetry	EXCELLENT
	Fluorescence	NONE
	Inscriptions(s)	689 LG71553398
	Comments:	The Laboratory Grown Diamond was created by Chemical Vapor Deposition (CVD) growth process.
	Type IIA	