

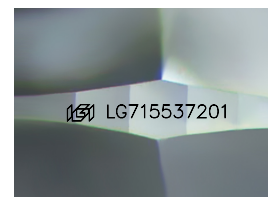
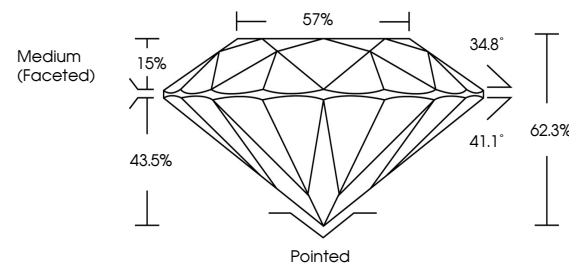


**ELECTRONIC COPY**

## LABORATORY GROWN DIAMOND REPORT

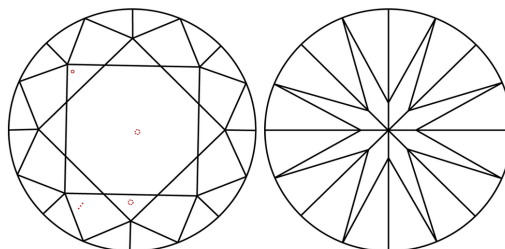
LG715537201  
Report verification at [igi.org](https://igi.org)

## PROPORTIONS



Sample Image Used

## CLARITY CHARACTERISTICS



### KEY TO SYMBOLS

Red symbols indicate internal characteristics.  
Green symbols indicate external characteristics.



**www.igi.org**

## LABORATORY GROWN DIAMOND REPORT



June 11, 2025

IGI Report Number **LG715537201**

Description	LABORATORY GROWN DIAMOND
-------------	--------------------------

Shape and Cutting Style **ROUND BRILLIANT**

Measurements 8.10 - 8.13 X 5.05 MM

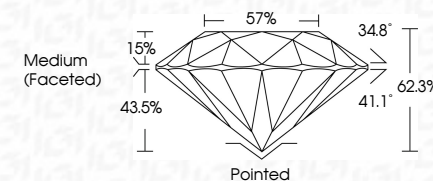
## GRADING RESULTS

Carat Weight **2.03 CARATS**

Color Grade

Clarity Grade VS 1

Cut Grade **IDEAL**



### ADDITIONAL GRADING INFORMATION

Polish **EXCELLENT**Symmetry **EXCELLENT**Fluorescence NONEInscription(s)  LG715537201

Comments: HEARTS & ARROWS

This Laboratory Grown Diamond was created by Chemical Vapor Deposition (CVD) growth process.  
Type IIa



June 11, 2025	2.03 CARATS	VS 1	Pointed	Comments: - HARS & ARROWS - Natural Diamond was - created by Chemical Vapor Deposition (CVD) growth process. - Type IIA
GI Report No. G771537201	D	IDEAL	EXCELLENT	
ROUND BRILLIANT		62.3%	EXCELLENT	
		57%	NONE	
		Medium (Faceted)	1691 G771537201	
10 - 13 X 5.05 MM	Card Weight	Clarity Grade	Culet	
	Color Grade	Clarity Grade	Polish	
		Color Grade	Symmetry	
		Depth	Fluorescence	
		Table	Inscriptions(s)	
		Girdle		

© IGI 2020, International Gemological Institute

FD - 10 20



THIS DOCUMENT WAS PRODUCED WITH THE FOLLOWING SECURITY MEASURES: SPECIAL DOCUMENT PAPER, INK SCREENS, WATERMARK BACKGROUND DESIGNS, HOLOGRAM AND OTHER SECURITY FEATURES NOT LISTED AND DO EXCEED DOCUMENT SECURITY INDUSTRY GUIDELINES