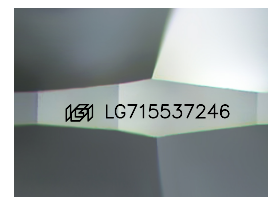
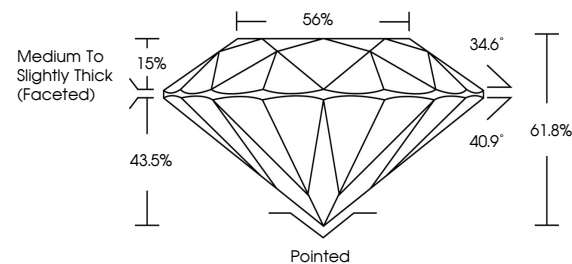


ELECTRONIC COPY

LABORATORY GROWN DIAMOND REPORT

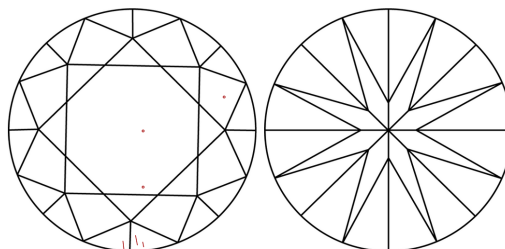
LG715537246
Report verification at igi.org

PROPORTIONS



Sample Image Used

CLARITY CHARACTERISTICS



KEY TO SYMBOLS

Red symbols indicate internal characteristics.
Green symbols indicate external characteristics.



www.igi.org

COLOR

D E F G H I J Faint Very Light Light

CLARITY

IF WS¹⁻² VS¹⁻² SI¹⁻² |¹⁻³

Internally Flawless	Very Very Slightly Included	Very Slightly Included	Slightly Included	Included
------------------------	--------------------------------	---------------------------	----------------------	----------



© IGI 2020, International Gemological Institute

FD - 10 20

THIS DOCUMENT WAS PRODUCED WITH THE FOLLOWING SECURITY MEASURES: SPECIAL DOCUMENT PAPER, INK SCREENS, WATERMARK, BACKGROUND DESIGNS, HOLOGRAM AND OTHER SECURITY FEATURES NOT LISTED AND DO EXCEED DOCUMENT SECURITY INDUSTRY GUIDELINES

LABORATORY GROWN DIAMOND REPORT



June 11, 2025

IGI Report Number **LG715537246**

Description	LABORATORY GROWN DIAMOND
-------------	--------------------------

Shape and Cutting Style **ROUND BRILLIANT**

Measurements 8.10 - 8.15 X 5.03 MM

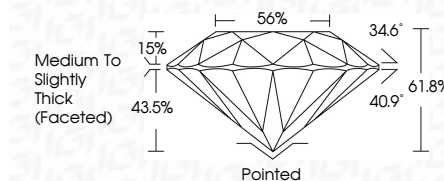
GRADING RESULTS

Carat Weight **2.03 CARATS**

Color Grade

Clarity Grade VS 1

Cut Grade **IDEAL**



ADDITIONAL GRADING INFORMATION

Polish **EXCELLENT**Symmetry **EXCELLENT**Fluorescence NONEInscription(s) LG715537246

Comments: HEARTS & ARROWS

Comments: HEARTS & ARROWS
This Laboratory Grown Diamond was created by
Chemical Vapor Deposition (CVD) growth process.
Type IIa



June 11, 2025	2.03 CARATS
GI Report No. LG715537246	
ROUND BRILLIANT	
10 - 10 - 6.15 X 6.08 MM	
Carat Weight	
Color Grade	VS 1
Clarity Grade	IDEAL
Cut Grade	61.8%
Depth	85%
Table	
Girdle	Medium to slightly Thick Faceted
Culet	Polished
Polish	EXCELLENT
Symmetry	EXCELLENT
Fluorescence	NONE
Inscriptions(s)	686 LG715537246
Comments:	
HEARS & ARROWS	
This Laboratory Grown Diamond was	
created by Chemical Vapor Deposition	
(CVD) growth process.	