

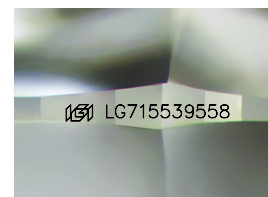
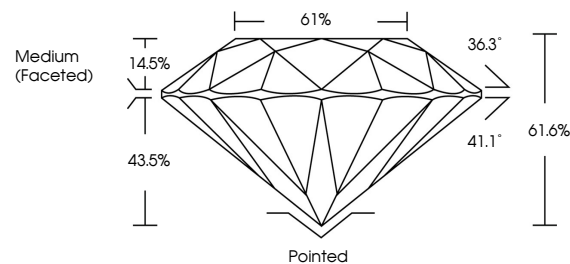


ELECTRONIC COPY

LABORATORY GROWN DIAMOND REPORT

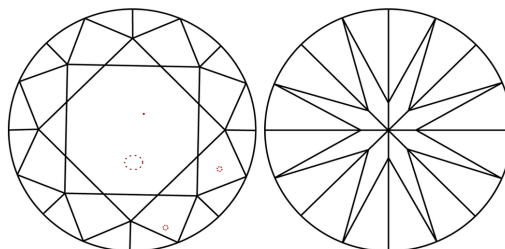
LG715539558
Report verification at igi.org

PROPORTIONS



Sample Image Used

CLARITY CHARACTERISTICS



KEY TO SYMBOLS

Red symbols indicate internal characteristics.
Green symbols indicate external characteristics.

COLOR

D E F G H I J Faint Very Light Light

CLARITY

IF VS¹⁻² VS¹⁻² S¹⁻² |¹⁻³

Internally Flawless	Very Very Slightly Included	Very Slightly Included	Slightly Included	Included
------------------------	--------------------------------	---------------------------	----------------------	----------

LABORATORY GROWN DIAMOND REPORT



June 13, 2025

IGI Report Number **LG715539558**

Description	LABORATORY GROWN DIAMOND
-------------	--------------------------

Shape and Cutting Style **ROUND BRILLIANT**

Measurements	6.58 - 6.62 X 4.07 MM
--------------	-----------------------

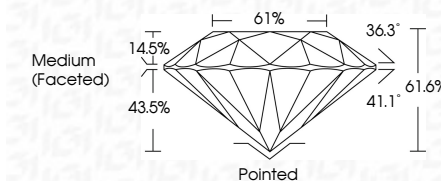
GRADING RESULTS

Carat Weight 1.10 CARAT

Color Grade	E
-------------	---

Clarity Grade VS 2

Cut Grade **EXCELLENT**



ADDITIONAL GRADING INFORMATION

Polish **EXCELLENT**Symmetry **EXCELLENT**Fluorescence NONEInscription(s) LG715539558

Comments: This Laboratory Grown Diamond was created by Chemical Vapor Deposition (CVD) growth process.
Type IIa



© IGI 2020, International Gemological Institute

FD - 10 20



THIS DOCUMENT WAS PRODUCED WITH THE FOLLOWING SECURITY MEASURES: SPECIAL DOCUMENT PAPER, INK SCREENS, WATERMARK, BACKGROUND DESIGNS, HOLOGRAM, AND OTHER SECURITY FEATURES NOT LISTED AND DO EXCEED DOCUMENT SECURITY INDUSTRY GUIDELINES.

www.igi.org

June 13, 2005	Carat Weight	1.10 CARAT
GI Report No. LG715309588	Color Grade	E
ROUND BRILLIANT	Clarity Grade	VS 2
5.68 - 6.02 X 4.07 MM	Cut Grade	EXCELLENT
	Depth	61.6%
	Table	61%
	Grain	Medium (frosted)
	Clue?	Pointed
	Polish	EXCELLENT
	Symmetry	EXCELLENT
	Fluorescence	NONE
	Inscriptions(s)	1691 LG715309588
	Comments:	The Laboratory Grown Diamond was created by Chemical Vapor Deposition (CVD) growth process.
	Type IIA	