

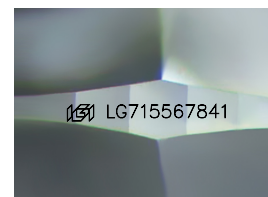
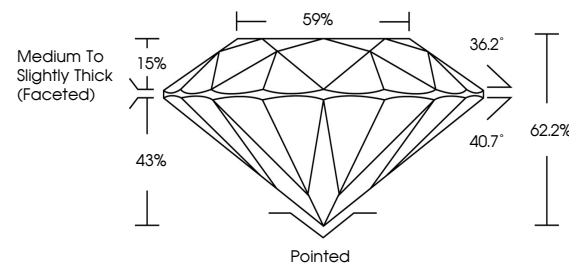


**ELECTRONIC COPY**

## LABORATORY GROWN DIAMOND REPORT

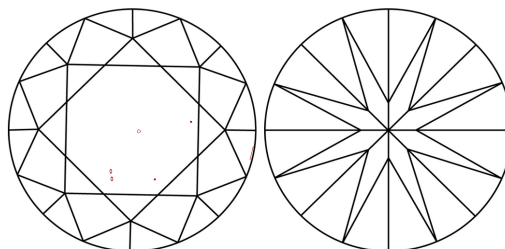
LG715567841  
Report verification at [igi.org](https://igi.org)

## PROPORTIONS



Sample Image Used

## CLARITY CHARACTERISTICS



## KEY TO SYMBOLS

Red symbols indicate internal characteristics.  
Green symbols indicate external characteristics.

## COLOR

D E F G H I J Faint Very Light Light

## CLARITY

IF WS<sup>1-2</sup> VS<sup>1-2</sup> SI<sup>1-2</sup> |<sup>1-3</sup>

Internally Flawless	Very Very Slightly Included	Very Slightly Included	Slightly Included	Included
------------------------	--------------------------------	---------------------------	----------------------	----------



June 14, 2025

IGI Report Number **LG715567841**

Description	LABORATORY GROWN DIAMOND
-------------	--------------------------

Shape and Cutting Style **ROUND BRILLIANT**

Measurements 8.09 - 8.13 X 5.04 MM

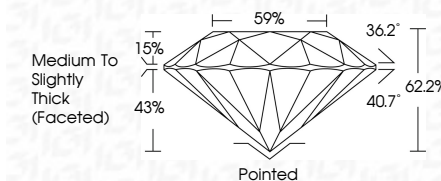
## GRADING RESULTS

Carat Weight 2.07 CARATS

Color Grade

Clarity Grade VS 2

Cut Grade **IDEAL**



### ADDITIONAL GRADING INFORMATION

Polish **EXCELLENT**Symmetry **EXCELLENT**Fluorescence **NONE**Inscription(s)  LG715567841

Comments: This Laboratory Grown Diamond was created by Chemical Vapor Deposition (CVD) growth process.  
Type IIa



© IGI 2020, International Gemological Institute

FD - 10 20



THIS DOCUMENT WAS PRODUCED WITH THE FOLLOWING SECURITY MEASURES: SPECIAL DOCUMENT PAPER, INK SCREENS, WATERMARK, BACKGROUND DESIGNS, HOLOGRAM AND OTHER SECURITY FEATURES NOT LISTED AND DO EXCEED DOCUMENT SECURITY INDUSTRY GUIDELINES

**www.igi.org**

<b>June 14, 2026</b>	<b>GIA Report No. G271557941</b>	<b>2.07 CARATS</b>
<b>ROUND BRILLIANT</b>		<b>VVS 2</b>
		<b>IDEAL</b>
		<b>62.2%</b>
		<b>59%</b>
		<b>Medium to Slightly Thick (Excellent)</b>
		<b>Pointed</b>
		<b>EXCELLENT</b>
		<b>EXCELLENT</b>
		<b>NONE</b>
		<b>#891671557941</b>
<b>Carat Weight</b>	<b>Color Grade</b>	<b>Cut Grade</b>
<b>0.09 - 0.13 X 5.01 MM</b>	<b>D clarity</b>	<b>Depth</b>
	<b>Table</b>	<b>Girdle</b>
	<b>Symmetry</b>	<b>Culet</b>
	<b>Polish</b>	<b>Fluorescence</b>
	<b>Inscriptions(s)</b>	
<b>Comments:</b>		
The Laboratory Grown Diamond was created by Chemical Vapor Deposition (CVD) growth process.		
Type Ila		