

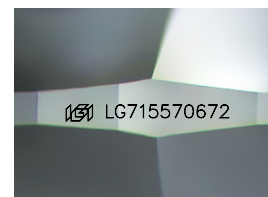
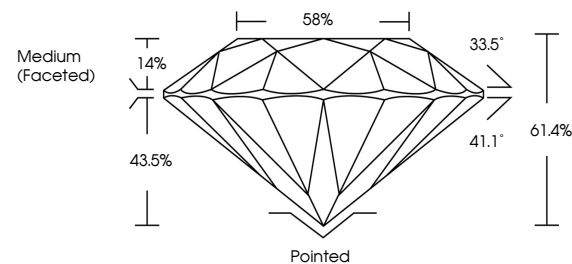


**ELECTRONIC COPY**

## LABORATORY GROWN DIAMOND REPORT

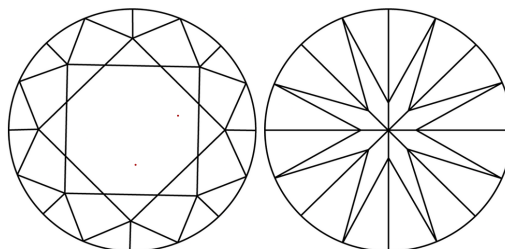
LG715570672  
Report verification at [igi.org](http://igi.org)

## PROPORTIONS



Sample Image Used

## CLARITY CHARACTERISTICS



### KEY TO SYMBOLS

Red symbols indicate internal characteristics.  
Green symbols indicate external characteristics.

## COLOR

D E F G H I J Faint Very Light Light

## CLARITY

IF WS<sup>1-2</sup> VS<sup>1-2</sup> SI<sup>1-2</sup> |<sup>1-3</sup>

Internally Flawless	Very Very Slightly Included	Very Slightly Included	Slightly Included	Included
------------------------	--------------------------------	---------------------------	----------------------	----------



June 20, 2025

IGI Report Number **LG715570672**

Description	LABORATORY GROWN DIAMOND
-------------	--------------------------

Shape and Cutting Style **ROUND BRILLIANT**

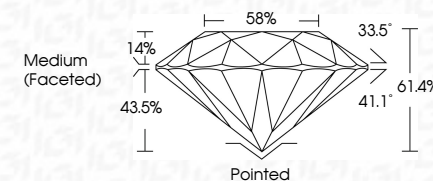
Measurements 8.15 - 8.17 X 5.01 MM

## GRADING RESULTS

Carat Weight **2.05 CARATS**

Color Grade EClarity Grade WS 2

Cut Grade **IDEAL**



### ADDITIONAL GRADING INFORMATION

Polish **EXCELLENT**Symmetry **EXCELLENT**Fluorescence **NONE**Inscription(s)  LG715570672

Comments: This Laboratory Grown Diamond was created by Chemical Vapor Deposition (CVD) growth process.  
Type IIa



© IGI 2020, International Gemological Institute

FD - 10 20



THIS DOCUMENT WAS PRODUCED WITH THE FOLLOWING SECURITY MEASURES: SPECIAL DOCUMENT PAPER, INK SCREENS, WATERMARK, BACKGROUND DESIGNS, HOLOGRAM, AND OTHER SECURITY FEATURES NOT LISTED AND DO EXCEED DOCUMENT SECURITY INDUSTRY GUIDELINES.

**www.igi.org**

June 20, 2025	GL Report No. LG71570672	2.05 CARATS	VVS 2	61.4%	58%	Pointed	Excellent	EXCELLENT	NONE	1691 LG71570672	Comments: The Laboratory Grown Diamond was found to be a synthetic chemical vapor deposition (CVD) grown process. Type IIa
ROUND BRILLIANT	2.05 CARATS	VVS 2	61.4%	58%	Pointed	Excellent	EXCELLENT	NONE	1691 LG71570672		