

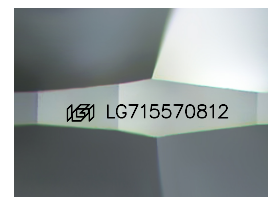
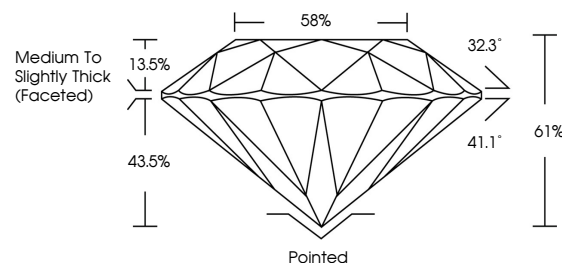


**ELECTRONIC COPY**

## LABORATORY GROWN DIAMOND REPORT

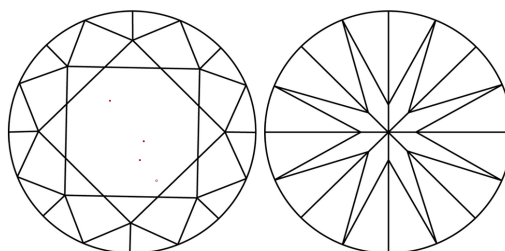
LG715570812  
Report verification at [igi.org](https://igi.org)

## PROPORTIONS



Sample Image Used

## CLARITY CHARACTERISTICS



### KEY TO SYMBOLS

Red symbols indicate internal characteristics.  
Green symbols indicate external characteristics.

## COLOR

D E F G H I J Faint Very Light Light

## CLARITY

IF WS<sup>1-2</sup> VS<sup>1-2</sup> SI<sup>1-2</sup> |<sup>1-3</sup>

| Internally<br>Flawless | Very Very<br>Slightly Included | Very<br>Slightly Included | Slightly<br>Included | Included |
|------------------------|--------------------------------|---------------------------|----------------------|----------|
|------------------------|--------------------------------|---------------------------|----------------------|----------|



June 20, 2025

IGI Report Number **LG715570812**Description **LABORATORY GROWN DIAMOND**Shape and Cutting Style **ROUND BRILLIANT**

Measurements 9.23 - 9.31 X 5.67 MM

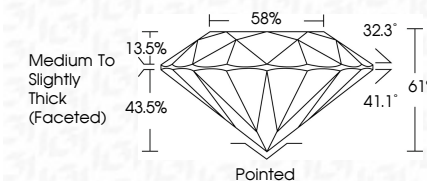
## GRADING RESULTS

Carat Weight **3.01 CARATS**

Color Grade E

Clarity Grade VS 1

Cut Grade **EXCELLENT**



### ADDITIONAL GRADING INFORMATION

Polish **EXCELLENT**Symmetry **EXCELLENT**Fluorescence **NONE**Inscription(s)  LG715570812

Comments: This Laboratory Grown Diamond was created by Chemical Vapor Deposition (CVD) growth process.  
Type IIa



© IGI 2020, International Gemological Institute

FD - 10 20

**www.igi.org**



THIS DOCUMENT WAS PRODUCED WITH THE FOLLOWING SECURITY MEASURES: SPECIAL DOCUMENT PAPER, INK SCREENS, WATERMARK, BACKGROUND DESIGNS, HOLOGRAM AND OTHER SECURITY FEATURES NOT LISTED AND DO EXCEED DOCUMENT SECURITY INDUSTRY GUIDELINE

June 20, 2025  
IGI Report No LG715570812  
ROUND BRILLIANT

|                       |               |                                    |
|-----------------------|---------------|------------------------------------|
| 9.23 - 9.31 X 5.67 MM | Carat Weight  | 3.01 CARATS                        |
|                       | Color Grade   | E                                  |
|                       | Clarity Grade | VS 1                               |
|                       | Cut Grade     | EXCELLENT                          |
|                       | Depth         | 61%                                |
|                       | Table         | 58%                                |
|                       | Girdle        | Medium to Slightly Thick (Faceted) |
|                       | Culet         | Pointed                            |
|                       | Polish        | EXCELLENT                          |
|                       | Symmetry      | EXCELLENT                          |
|                       | Fluorescence  | NONE                               |
|                       | Report #      | 4561 / 271570610                   |

**Comments:**  
This Laboratory Grown Diamond was  
created by Chemical Vapor Deposition  
(CVD) growth process.