

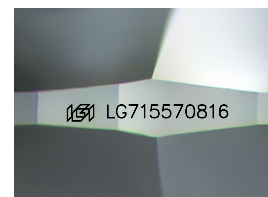
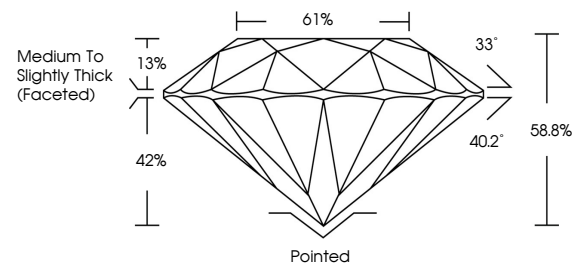


ELECTRONIC COPY

LABORATORY GROWN DIAMOND REPORT

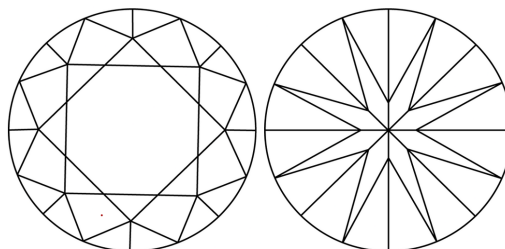
LG715570816
Report verification at igi.org

PROPORTIONS



Sample Image Used

CLARITY CHARACTERISTICS



KEY TO SYMBOLS

Red symbols indicate internal characteristics.
Green symbols indicate external characteristics.

COLOR

D E F G H I J Faint Very Light Light

CLARITY

IF WS¹⁻² VS¹⁻² SI¹⁻² |¹⁻³

Internally Flawless	Very Very Slightly Included	Very Slightly Included	Slightly Included	Included
------------------------	--------------------------------	---------------------------	----------------------	----------



June 20, 2025

IGI Report Number **LG715570816**

Description	LABORATORY GROWN DIAMOND
-------------	--------------------------

Shape and Cutting Style **ROUND BRILLIANT**

Measurements 9.39 - 9.41 X 5.52 MM

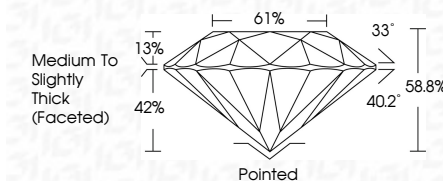
GRADING RESULTS

Carat Weight **3.01 CARATS**

Color Grade E

Clarity Grade **VVS 2**

Cut Grade **EXCELLENT**



ADDITIONAL GRADING INFORMATION

Polish **EXCELLENT**Symmetry **EXCELLENT**Fluorescence **NONE**Inscription(s) LG715570816

Comments: This Laboratory Grown Diamond was created by Chemical Vapor Deposition (CVD) growth process.
Type IIa



© IGI 2020, International Gemological Institute

FD - 10 20

www.igi.org



THIS DOCUMENT WAS PRODUCED WITH THE FOLLOWING SECURITY MEASURES: SPECIAL DOCUMENT PAPER, INK SCREENS, WATERMARK, BACKGROUND DESIGNS, HOLOGRAM AND OTHER SECURITY FEATURES NOT LISTED AND DO EXCEED DOCUMENT SECURITY INDUSTRY GUIDELINES

June 20, 2025
IGI Report No LG715570816
ROUND BRILLIANT

9.99 - 9.41 X 5.52 MM	
Carat Weight	3.01 CARATS
Color Grade	VVS 2
Clarity Grade	EXCELLENT
Cut Grade	58.6%
Depth	61%
Table	Medium to Slightly Thick (faceted)
Girdle	
Culet	Pointed
Polish	EXCELLENT
Symmetry	EXCELLENT
Fluorescence	NONE
Measurements	9.99 (12.15) 9.41 (12.70) 5.52 (12.70) 4

Comments:
This Laboratory Grown Diamond was created by Chemical Vapor Deposition (CVD) growth process.