

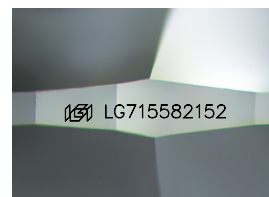
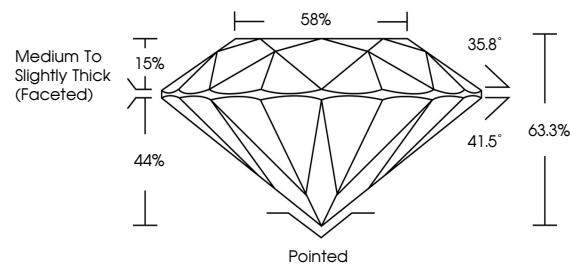


ELECTRONIC COPY

LABORATORY GROWN DIAMOND REPORT

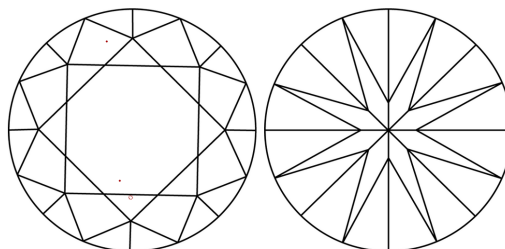
LG715582152
Report verification at igi.org

PROPORTIONS



Sample Image Used

CLARITY CHARACTERISTICS



KEY TO SYMBOLS

Red symbols indicate internal characteristics.
Green symbols indicate external characteristics.

COLOR

D E F G H I J Faint Very Light Light

CLARITY

IF WS¹⁻² VS¹⁻² SI¹⁻² |¹⁻³

Internally Flawless	Very Very Slightly Included	Very Slightly Included	Slightly Included	Included
------------------------	--------------------------------	---------------------------	----------------------	----------



© IGI 2020, International Gemological Institute

FD - 10 20

www.igi.org

LABORATORY GROWN DIAMOND REPORT



June 16, 2025

IGI Report Number **LG715582152**

Description	LABORATORY GROWN DIAMOND
-------------	--------------------------

Shape and Cutting Style **ROUND BRILLIANT**

Measurements 7.37 - 7.41 X 4.68 MM

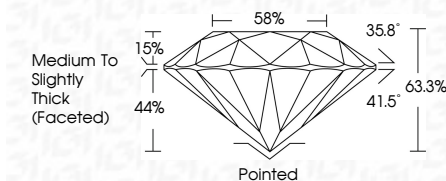
GRADING RESULTS

Carat Weight **1.59 CARAT**

Color Grade	D
-------------	---

Clarity Grade **VVS 2**

Cut Grade **EXCELLENT**



ADDITIONAL GRADING INFORMATION

Polish **EXCELLENT**Symmetry **EXCELLENT**Fluorescence **NONE**Inscription(s) LG715582152

Comments: This Laboratory Grown Diamond was created by Chemical Vapor Deposition (CVD) growth process.
Type IIa



June 16, 2025	GI Report No. G5715592152	1.59 CARAT
ROUND BRILLIANT		D
7.37 - 7.41 X 4.68 MM		VVS 2
Color: Color		EXCELLENT
Clarity: Grade		63.3%
Cut: Grade		58%
Depth		Medium To Slightly Thick (faceted)
Table		
Girdle		
Culet		Pointed
Polish		EXCELLENT
Symmetry		EXCELLENT
Fluorescence		NONE
Surface (Inclusions)		681 G5715592152
Comments:		
This Laboratory Grown Diamond was created by Chemical Vapor Deposition (CVD) growth process.		
Type IIa		