

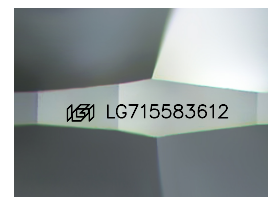
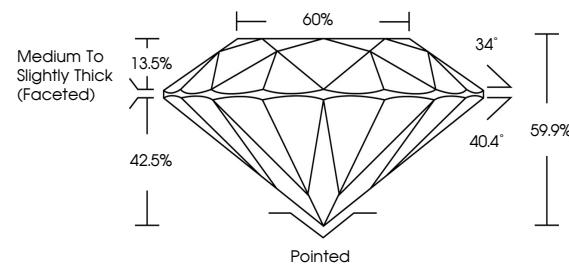


ELECTRONIC COPY

LABORATORY GROWN DIAMOND REPORT

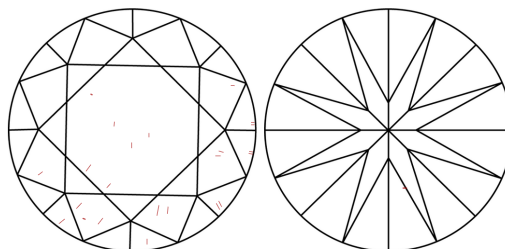
LG715583612
Report verification at igi.org

PROPORTIONS



Sample Image Used

CLARITY CHARACTERISTICS



KEY TO SYMBOLS

Red symbols indicate internal characteristics.
Green symbols indicate external characteristics.

COLOR

D E F G H I J Faint Very Light Light

CLARITY

IF WS¹⁻² VS¹⁻² SI¹⁻² |¹⁻³

Internally Flawless	Very Very Slightly Included	Very Slightly Included	Slightly Included	Included
------------------------	--------------------------------	---------------------------	----------------------	----------

LABORATORY GROWN DIAMOND REPORT



July 7, 2025

IGI Report Number **LG715583612**Description **LABORATORY GROWN DIAMOND**Shape and Cutting Style **ROUND BRILLIANT**

Measurements **6.43 - 6.45 X 3.86 MM**

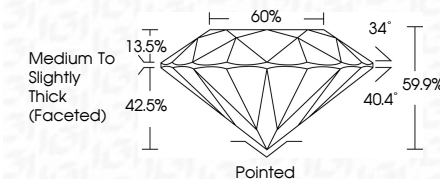
GRADING RESULTS

Carat Weight 1.00 CARAT

Color Grade E

Clarity Grade VS 2

Cut Grade **IDEAL**



ADDITIONAL GRADING INFORMATION

Polish **EXCELLENT**Symmetry **EXCELLENT**Fluorescence **NONE**Inscription(s) LG715583612

Comments: As Grown - No indication of post-growth treatment.

This Laboratory Grown Diamond was created by High Pressure High Temperature (HPHT) growth process.
Type II



© IGI 2020, International Gemological Institute

FD - 10 20



THIS DOCUMENT WAS PRODUCED WITH THE FOLLOWING SECURITY MEASURES: SPECIAL DOCUMENT PAPER, INK SCREENS, WATERMARK, BACKGROUND DESIGNS, HOLOGRAM AND OTHER SECURITY FEATURES NOT LISTED AND DO EXCEED DOCUMENT SECURITY INDUSTRY GUIDELINES

www.igi.org

JUN 7, 2025		IGI Report No. I67115593612	
ROUND BRILLIANT		1.00 CARAT	
4.48 - 4.45 X 3.95 MM		E	
Carat Weight	Color Grade	Clarity Grade	VS 2
		Cut Grade	IDEAL
		Depth	59.9%
		Table	60%
		Grade	Medium to Slightly Thick (Faced)
Culet	Polish	Symmetry	Pointed
		Fluorescence	EXCELLENT
		Inscription(s)	EXCELLENT
			NONE
Comments:		IGI I67115593612	
As Grown - No indication of post-growth treatment.			
The Laboratory Grown Diamond was created by High Pressure High Temperature (HPHT) growth process.			
Type IIa			