



# INTERNATIONAL GEMOLOGICAL INSTITUTE

ELECTRONIC COPY

## LABORATORY GROWN DIAMOND REPORT

June 23, 2025  
IGI Report Number **LG715596337**  
Description **LABORATORY GROWN DIAMOND**  
Shape and Cutting Style **EMERALD CUT**  
Measurements **6.36 X 4.42 X 2.99 MM**

### GRADING RESULTS

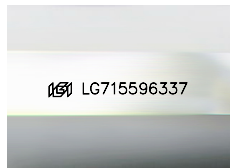
Carat Weight **0.86 CARAT**  
Color Grade **FANCY DEEP PINK**  
Clarity Grade **VS 1**

### ADDITIONAL GRADING INFORMATION

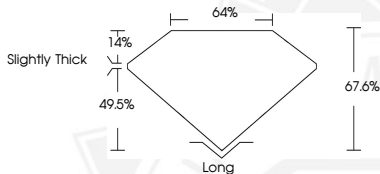
Polish **EXCELLENT**  
Symmetry **EXCELLENT**  
Fluorescence **NONE**  
Inscription(s) **IGI LG715596337**

Comments: This Laboratory Grown Diamond was created by Chemical Vapor Deposition (CVD) growth process. Indications of post-growth treatment.

Secondary color: Purple



Sample Image Used



June 23, 2025  
IGI Report Number **LG715596337**  
EMERALD CUT  
LABORATORY GROWN DIAMOND  
**6.36 X 4.42 X 2.99 MM**  
Carat Weight **0.86 CARAT**  
Color Grade **FANCY DEEP PINK**  
Clarity Grade **VS 1**  
Polish **EXCELLENT**  
Symmetry **EXCELLENT**  
Fluorescence **NONE**  
Inscription(s) **IGI LG715596337**  
Comments: This Laboratory Grown Diamond was created by Chemical Vapor Deposition (CVD) growth process. Indications of post-growth treatment.  
Secondary color: Purple



June 23, 2025  
IGI Report Number **LG715596337**  
EMERALD CUT  
LABORATORY GROWN DIAMOND  
**6.36 X 4.42 X 2.99 MM**  
Carat Weight **0.86 CARAT**  
Color Grade **FANCY DEEP PINK**  
Clarity Grade **VS 1**  
Polish **EXCELLENT**  
Symmetry **EXCELLENT**  
Fluorescence **NONE**  
Inscription(s) **IGI LG715596337**  
Comments: This Laboratory Grown Diamond was created by Chemical Vapor Deposition (CVD) growth process. Indications of post-growth treatment.  
Secondary color: Purple



THIS DOCUMENT WAS PRODUCED WITH THE FOLLOWING SECURITY MEASURES: SPECIAL DOCUMENT PAPER, INK SCREENS, WATERMARK, BACKGROUND DESIGN, HOLOGRAM AND OTHER SECURITY FEATURES NOT LISTED AND DO EXCEED DOCUMENT SECURITY INDUSTRY GUIDELINES.

For terms & conditions and to verify this report, please visit [www.igi.org](http://www.igi.org)