

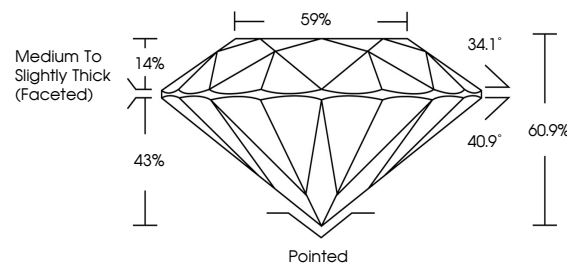


**ELECTRONIC COPY**

## LABORATORY GROWN DIAMOND REPORT

LG715598514  
Report verification at [lgi.org](https://lgi.org)

## PROPORTIONS



## CLARITY CHARACTERISTICS



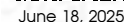
## KEY TO SYMBOLS

Red symbols indicate internal characteristics.  
Green symbols indicate external characteristics.



**www.igi.org**

## LABORATORY GROWN DIAMOND REPORT

IGI Report Number **LG715598514**Description **LABORATORY GROWN DIAMOND**Shape and Cutting Style **ROUND BRILLIANT**

Measurements 6.55 - 6.58 X 4.00 MM

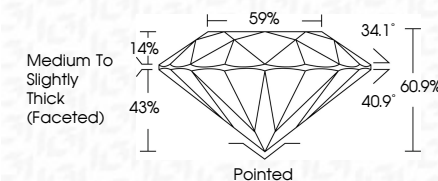
## GRADING RESULTS

Carat Weight 1.06 CARAT

Color Grade D

Clarity Grade **INTERNALLY FLAWLESS**

Cut Grade **IDEAL**



### ADDITIONAL GRADING INFORMATION

Polish **EXCELLENT**Symmetry **EXCELLENT**Fluorescence **NONE**Inscription(s)  LG715598514

Comments: HEARTS & ARROWS

As Grown - No indication of post-growth treatment.

This Laboratory Grown Diamond was created by High

Pressure High Temperature (HPHT) growth process.

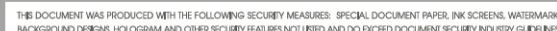
Type II



IG

© IGI 2020, International Gemological Institute

FD - 10 20

[illegible]