

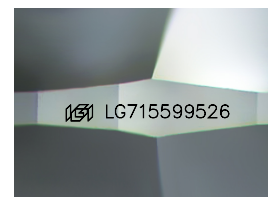
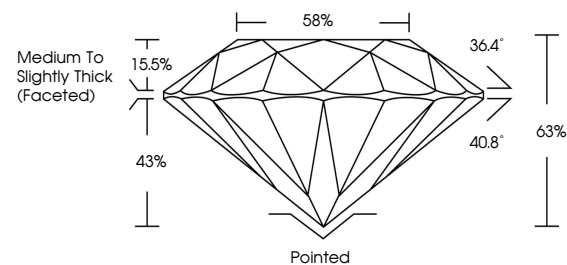


ELECTRONIC COPY

LABORATORY GROWN DIAMOND REPORT

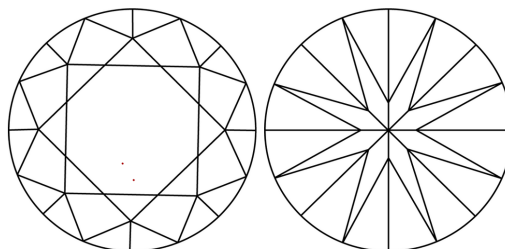
LG715599526
Report verification at igi.org

PROPORTIONS



Sample Image Used

CLARITY CHARACTERISTICS



KEY TO SYMBOLS

Red symbols indicate internal characteristics.
Green symbols indicate external characteristics.

COLOR

D E F G H I J Faint Very Light Light

CLARITY

IF WS¹⁻² VS¹⁻² SI¹⁻² |¹⁻³

Internally Flawless	Very Very Slightly Included	Very Slightly Included	Slightly Included	Included
------------------------	--------------------------------	---------------------------	----------------------	----------

LABORATORY GROWN DIAMOND REPORT



June 17, 2025

IGI Report Number **LG715599526**Description **LABORATORY GROWN DIAMOND**Shape and Cutting Style **ROUND BRILLIANT**

Measurements 9.19 - 9.24 X 5.80 MM

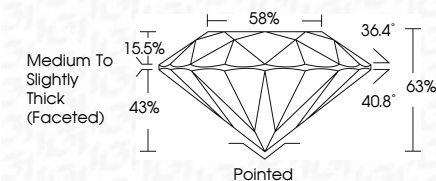
GRADING RESULTS

Carat Weight **3.09 CARATS**

Color Grade	F
-------------	---

Clarity Grade **VVS 2**

Cut Grade **EXCELLENT**



ADDITIONAL GRADING INFORMATION

Polish **EXCELLENT**Symmetry **EXCELLENT**

Fluorescence NONI

Inscription(s) LG715599526

Comments: This Laboratory Grown Diamond was created by Chemical Vapor Deposition (CVD) growth process.
Type IIa



© IGI 2020, International Gemological Institute

FD - 10 20

www.igi.org



THIS DOCUMENT WAS PRODUCED WITH THE FOLLOWING SECURITY MEASURES: SPECIAL DOCUMENT PAPER, INK SCREENS, WATERMARK, BACKGROUND DESIGNS, HOLOGRAM, AND OTHER SECURITY FEATURES NOT LISTED AND DO EXCEED DOCUMENT SECURITY INDUSTRY GUIDELINES.

June 17, 2025
IGI Report No LG715599526
ROUND BRILLIANT

19.19 - 9.24 X 5.60 MM		3.09 CARATS
Carat Weight		F
Color Grade		
Clarity Grade	VVS 2	EXCELLENT
Cut Grade		63%
Depth		58%
Table		Medium to Slightly Thick (faceted)
Girdle		
Culet		Pointed
Polish		EXCELLENT
Symmetry		EXCELLENT
Fluorescence		NONE
Identification		gem CT12062064

Comments:
This Laboratory Grown Diamond was created by Chemical Vapor Deposition (CVD) growth process.