



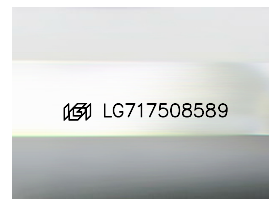
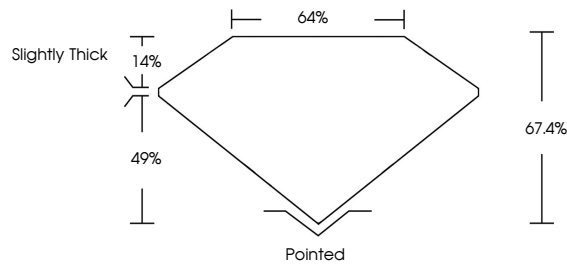
**INTERNATIONAL
GEMOLOGICAL
INSTITUTE**

ELECTRONIC COPY

LABORATORY GROWN DIAMOND REPORT

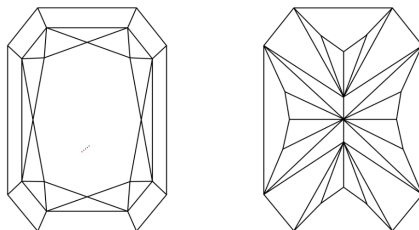
LG717508589
Report verification at igi.org

PROPORTIONS



Sample Image Used

CLARITY CHARACTERISTICS



KEY TO SYMBOLS

Red symbols indicate internal characteristics.
Green symbols indicate external characteristics.

COLOR

D E F G H I J Faint Very Light Light

CLARITY

IF WS¹⁻² VS¹⁻² SI¹⁻² I¹⁻³

| Internally Flawless | Very Very Slightly Included | Very Slightly Included | Slightly Included | Included |
|------------------------|--------------------------------|---------------------------|----------------------|----------|
|------------------------|--------------------------------|---------------------------|----------------------|----------|



© IGI 2020, International Gemological Institute

FD - 10 20

www.igi.org

THIS DOCUMENT WAS PRODUCED WITH THE FOLLOWING SECURITY MEASURES: SPECIAL DOCUMENT PAPER, INK SCREENS, WATERMARK, BACKGROUND DESIGNS, HOLOGRAM AND OTHER SECURITY FEATURES NOT LISTED AND DO EXCEED DOCUMENT SECURITY INDUSTRY GUIDELINES

LABORATORY GROWN DIAMOND REPORT



June 23, 2025

IGI Report Number **LG717508589**

| | |
|-------------|--------------------------|
| Description | LABORATORY GROWN DIAMOND |
|-------------|--------------------------|

Shape and Cutting Style

CUT CORNERED
RECTANGULAR MODIFIED
BRILLIANT

Measurements 7.19 X 5.03 X 3.39 MM

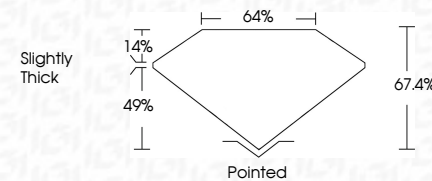
GRADING RESULTS

Carat Weight **1.06 CARAT**

| | |
|-------------|---|
| Color Grade | D |
|-------------|---|

Clarity Grade **VVS 2**

Cut Grade **EXCELLENT**



ADDITIONAL GRADING INFORMATION

Polish **EXCELLENT**Symmetry **EXCELLENT**Fluorescence **NONE**Inscription(s) LG71750858

Comments: This Laboratory Grown Diamond was created by Chemical Vapor Deposition (CVD) growth process.
Type IIa



IG

| | |
|--|---|
| June 23, 2025 | |
| GIG Report No LG71790869 | |
| CUT CORNERED RECT. MODIFIED BRILLIANT | |
| 1.06 CARAT | D |
| VVS 2 | |
| EXCELLENT | |
| 67.4% | |
| 64% | |
| Slightly Thick | |
| Poined | |
| EXCELLENT | |
| EXCELLENT | |
| NONE | |
| (#) LG71790869 | |
| Comments: | |
| This Laboratory Grown Diamond was created by Chemical Vapor Deposition (CVD) growth process. | |
| Type Ila | |