

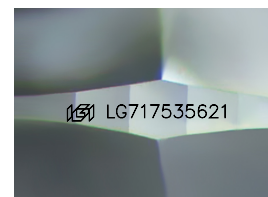
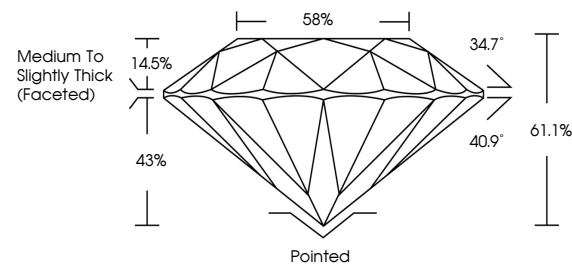


ELECTRONIC COPY

LABORATORY GROWN DIAMOND REPORT

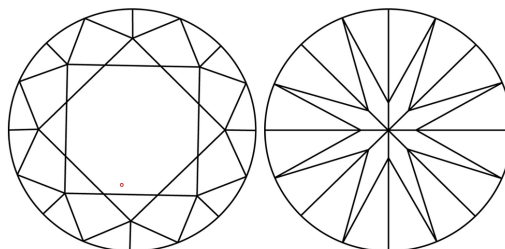
LG717535621
Report verification at igi.org

PROPORTIONS



Sample Image Used

CLARITY CHARACTERISTICS



KEY TO SYMBOLS

Red symbols indicate internal characteristics.
Green symbols indicate external characteristics.

COLOR

D E F G H I J Faint Very Light Light

CLARITY

IF WS¹⁻² VS¹⁻² SI¹⁻² |¹⁻³

Internally Flawless	Very Very Slightly Included	Very Slightly Included	Slightly Included	Included
------------------------	--------------------------------	---------------------------	----------------------	----------

LABORATORY GROWN DIAMOND REPORT



June 19, 2025

IGI Report Number **LG717535621**Description **LABORATORY GROWN DIAMOND**Shape and Cutting Style **ROUND BRILLIANT**

Measurements 8.25 - 8.34 X 5.05 MM

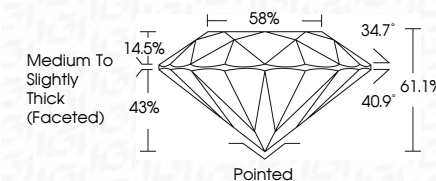
GRADING RESULTS

Carat Weight **2.10 CARATS**

Color Grade

Clarity Grade VS 1

Cut Grade **IDEAL**



ADDITIONAL GRADING INFORMATION

Polish **EXCELLENT**Symmetry **EXCELLENT**Fluorescence **NONE**Inscription(s) LG717535621

Comments: This Laboratory Grown Diamond was created by Chemical Vapor Deposition (CVD) growth process.
Type IIa



© IGI 2020, International Gemological Institute

FD - 10 20



THIS DOCUMENT WAS PRODUCED WITH THE FOLLOWING SECURITY MEASURES: SPECIAL DOCUMENT PAPER, INK SCREENS, WATERMARK, BACKGROUND DESIGNS, HOLOGRAM AND OTHER SECURITY FEATURES NOT LISTED AND DO EXCEED DOCUMENT SECURITY INDUSTRY GUIDELINES

www.igi.org

June 19, 2025	2.10 CARATS	Color Weight	Round Brilliant 2.10 CARATS VS 1 IDEAL 61.1% 59% Medium to Slightly Thick (scored)	Pointed	NONE (69) LG77735621	Comments: The Laboratory Grown Diamond was created by Chemical Vapor Deposition (CVD) growth process.
GI Report No. LG77735621	Color Grade	Clarity Grade		Excellent		
ROUND BRILLIANT	2.05 - 2.25 - 8.34 X 5.05 MM	Depth		Excellent		
		Table				
		Girdle				
		Culet				Type IIA
		Polish				
		Symmetry				
		Fluorescence				
		Inscriptions(s)				