

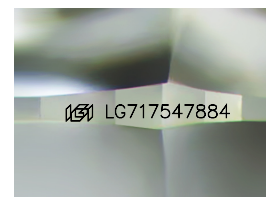
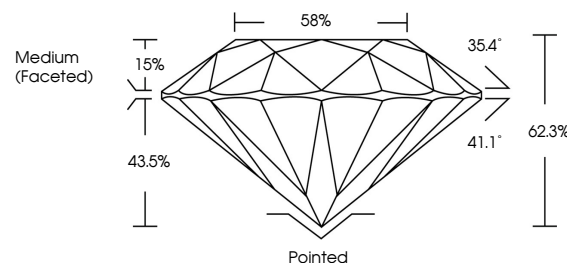


ELECTRONIC COPY

LABORATORY GROWN DIAMOND REPORT

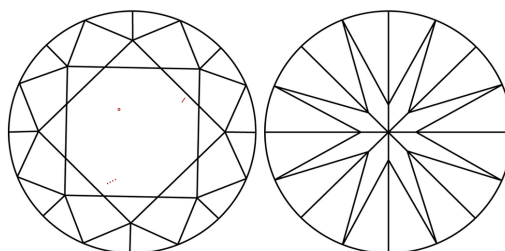
LG717547884
Report verification at igi.org

PROPORTIONS



Sample Image Used

CLARITY CHARACTERISTICS



KEY TO SYMBOLS

Red symbols indicate internal characteristics.
Green symbols indicate external characteristics.



www.igi.org

LABORATORY GROWN DIAMOND REPORT



June 20, 2025

IGI Report Number **LG717547884**Description **LABORATORY GROWN DIAMOND**Shape and Cutting Style **ROUND BRILLIANT**

Measurements 8.03 - 8.09 X 5.01 MM

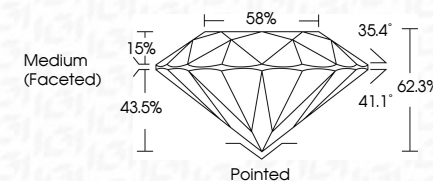
GRADING RESULTS

Carat Weight **2.00 CARATS**

Color Grade

Clarity Grade VS 1

Cut Grade **IDEAL**



ADDITIONAL GRADING INFORMATION

Polish **EXCELLENT**Symmetry **EXCELLENT**Fluorescence NONEInscription(s) LG717547884

Comments: HEARTS & ARROWS

Comments: HEARTS & ARROWS
This Laboratory Grown Diamond was created by
Chemical Vapor Deposition (CVD) growth process.
Type IIa



June 20, 2025	2.00 CARATS	Color Weight	VS 1	Pointed	Comments: HEARS & ARROWS Diamond used is certified by GIA as being created by chemical vapor deposition (CVD) growth process. Type IIA
G1 Report No. G277547884	D	Color Grade	IDEAL	EXCELLENT	
ROUND BRILLIANT		Clarity Grade	62.3%	EXCELLENT	
1.03 - 1.09 X 5.01 MM		Cur Grade	58%	NONE	
		Depth	Medium (Faceted)	g91.677/507884	
		Table			
		Girdle			
				Culet	
				Polish	
				Symmetry	
				Fluorescence	
				Inscriptions(s)	

© IGI 2020, International Gemological Institute

FD - 10 20



THIS DOCUMENT WAS PRODUCED WITH THE FOLLOWING SECURITY MEASURES: SPECIAL DOCUMENT PAPER, INK SCREENS, WATERMARK, BACKGROUND DESIGNS, HOLOGRAM AND OTHER SECURITY FEATURES NOT LISTED AND DO EXCEED DOCUMENT SECURITY INDUSTRY GUIDELINES