

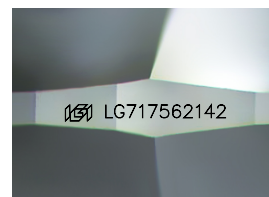
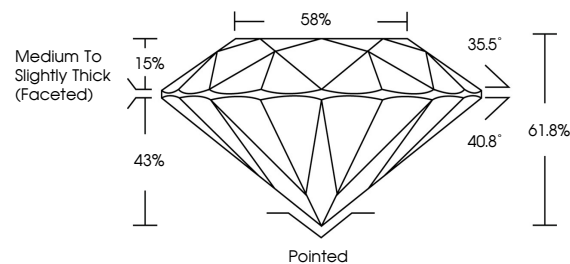


ELECTRONIC COPY

LABORATORY GROWN DIAMOND REPORT

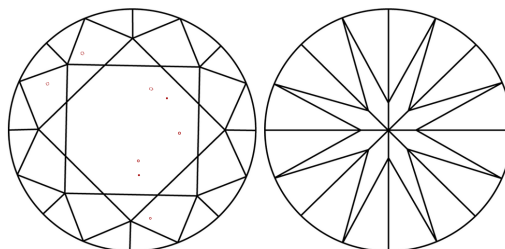
LG717562142
Report verification at igi.org

PROPORTIONS



Sample Image Used

CLARITY CHARACTERISTICS



KEY TO SYMBOLS

Red symbols indicate internal characteristics.
Green symbols indicate external characteristics.

COLOR

D E F G H I J Faint Very Light Light

CLARITY

IF WS¹⁻² VS¹⁻² SI¹⁻² |¹⁻³

| Internally Flawless | Very Very Slightly Included | Very Slightly Included | Slightly Included | Included |
|------------------------|--------------------------------|---------------------------|----------------------|----------|
|------------------------|--------------------------------|---------------------------|----------------------|----------|

LABORATORY GROWN DIAMOND REPORT



June 26, 2025

IGI Report Number **LG717562142**Description **LABORATORY GROWN DIAMOND**Shape and Cutting Style **ROUND BRILLIANT**

Measurements 10.20 - 10.27 X 6.33 MM

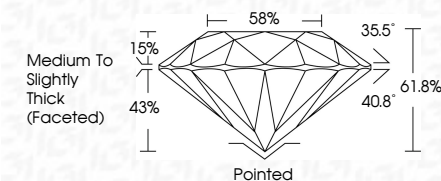
GRADING RESULTS

Carat Weight **4.13 CARATS**

Color Grade D

Clarity Grade VS 1

Cut Grade **IDEAL**



ADDITIONAL GRADING INFORMATION

Polish **EXCELLENT**Symmetry **EXCELLENT**Fluorescence **NONE**Inscription(s) LG717562142

Comments: This Laboratory Grown Diamond was created by Chemical Vapor Deposition (CVD) growth process.
Type IIa



IG



© IGI 2020, International Gemological Institute

FD - 10 20

www.igi.org



THIS DOCUMENT WAS PRODUCED WITH THE FOLLOWING SECURITY MEASURES: SPECIAL DOCUMENT PAPER, INK SCREENS, WATERMARK, BACKGROUND DESIGNS, HOLOGRAM AND OTHER SECURITY FEATURES NOT LISTED AND DO EXCEED DOCUMENT SECURITY INDUSTRY GUIDELINES

| | | | | | | | | |
|-----------------|-----------------------------|-------------|-------|------------------------------------|-----------|------|------------------|---|
| June 26, 2025 | IGI Report No. 15717562.142 | 4.13 CARATS | VS 1 | Medium to Slightly Thick (Faceted) | Polished | NONE | §§§ 15717562.142 | Comments: This Laboratory Grown Diamond was created by Chemical Vapor Deposition (CVD) growth process. Type IIa |
| ROUND BRILLIANT | 10.20 - 10.27 X 6.33 MM | D | IDEAL | | EXCELLENT | | | |
| | Carat Weight | | 61.8% | | EXCELLENT | | | |
| | Color Grade | | 88% | | | | | |
| | Clarity Grade | | | | | | | |
| | Cut Grade | | | | | | | |
| | Depth | | | | | | | |
| | Table | | | | | | | |
| | Girdle | | | | | | | |
| | Culet | | | | | | | |
| | Polish | | | | | | | |
| | Symmetry | | | | | | | |
| | Fluorescence | | | | | | | |
| | Annotations | | | | | | | |