



ELECTRONIC COPY

LABORATORY GROWN DIAMOND REPORT

LG717585760
Report verification at igi.org

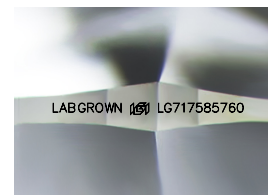
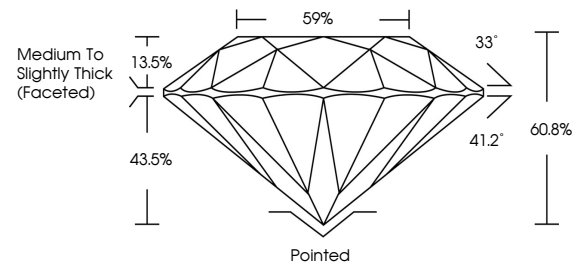
July 1, 2025	
IGI Report Number	LG717585760
Description	LABORATORY GROWN DIAMOND
Shape and Cutting Style	ROUND BRILLIANT
Measurements	6.77 - 6.78 X 4.12 MM
GRADING RESULTS	
Carat Weight	1.16 CARAT
Color Grade	D
Clarity Grade	VVS 2
Cut Grade	IDEAL

ADDITIONAL GRADING INFORMATION

Polish	EXCELLENT
Symmetry	EXCELLENT
Fluorescence	NONE
Inscription(s)	LABGROWN 16 LG717585760

Comments: This Laboratory Grown Diamond was created by Chemical Vapor Deposition (CVD) growth process.
Type IIa

PROPORTIONS



Sample Image Used

COLOR

D E F G H I J Faint Very Light Light

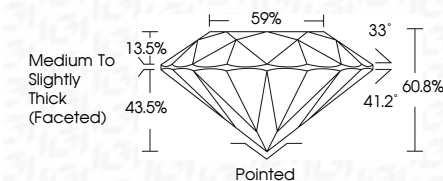
CLARITY

IF	VS ¹⁻²	VS ¹⁻²	SI ¹⁻²	I ¹⁻³
Internally Flawless	Very Very Slightly Included	Very Slightly Included	Slightly Included	Included

LABORATORY GROWN DIAMOND REPORT



July 1, 2025	
IGI Report Number	LG717585760
Description	LABORATORY GROWN DIAMOND
Shape and Cutting Style	ROUND BRILLIANT
Measurements	6.77 - 6.78 X 4.12 MM
GRADING RESULTS	
Carat Weight	1.16 CARAT
Color Grade	D
Clarity Grade	VVS 2
Cut Grade	IDEAL



ADDITIONAL GRADING INFORMATION

Polish	EXCELLENT
Symmetry	EXCELLENT
Fluorescence	NONE
Inscription(s)	LABGROWN (LGI) LG171585760
<p>Comments: This Laboratory Grown Diamond was created by Chemical Vapor Deposition (CVD) growth process.</p> <p>Type Ila</p>	



© IGI 2020, International Gemological Institute

FD - 10 20



THIS DOCUMENT WAS PRODUCED WITH THE FOLLOWING SECURITY MEASURES: SPECIAL DOCUMENT PAPER, INK SCREENS, WATERMARK, BACKGROUND DESIGNS, HOLOGRAM, AND OTHER SECURITY FEATURES NOT LISTED AND DO EXCEED DOCUMENT SECURITY INDUSTRY GUIDELINES.

www.igi.org

July 1, 2025
GJ Report No | G717585760

GI Report No LG71
POC IND BRILLIANT

ROUND BRILLIANT
5.77 - 6.78 X 4.12 MM

6.77 - 6.78 X 4.12 MM
Carat Weight 1.16 CARAT

Catalyst Weight%	1.16 CARAT
Color Grade	D

Clarity Grade	WS2
Very Good	
Good	
Fair	
Poor	
Very Poor	

Depth	Out Grade	IDEAL	40 000
-------	-----------	-------	--------

Depth	60.8%
Table	59%

Girdle

Thick (Faceted)

Culet	Pointed
Polish	EXCELLENT

Polystyrene
Symmetry

Fluorescence	NONE
Inscription(s)	1 ABGROWN 1651

LABGROWN (59)
LG717585760

Comments:
This Laboratory Grown Diamond was

created by Chemical Vapor Deposition (CVD) growth process.

Type IIa