



**ELECTRONIC COPY**

## LABORATORY GROWN DIAMOND REPORT

LG717586108  
Report verification at [igi.org](https://igi.org)

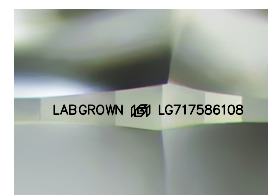
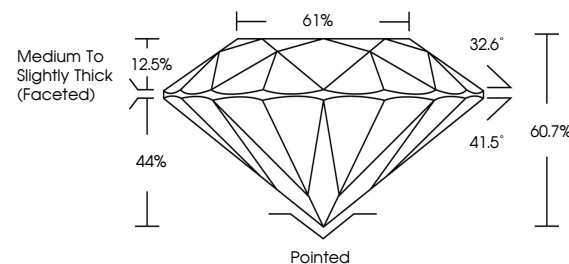
June 27, 2025	
IGI Report Number	LG717586108
Description	LABORATORY GROWN DIAMOND
Shape and Cutting Style	ROUND BRILLIANT
Measurements	11.31 - 11.37 X 6.89 MM
GRADING RESULTS	
Carat Weight	5.45 CARATS
Color Grade	F
Clarity Grade	VVS 2
Cut Grade	EXCELLENT

### ADDITIONAL GRADING INFORMATION

Polish	EXCELLENT
Symmetry	EXCELLENT
Fluorescence	NONE
Inscription(s)	LABGROWN (5) LG717586108

Comments: This Laboratory Grown Diamond was created by Chemical Vapor Deposition (CVD) growth process.  
Type IIa

## PROPORTIONS



Sample Image Used

## COLOR

D E F G H I J Faint Very Light Light

## CLARITY

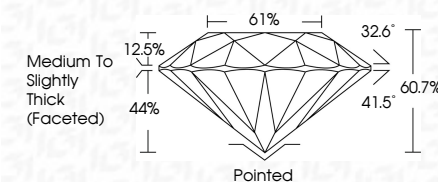
IF                      VS<sup>1-2</sup>                      VS<sup>1-2</sup>                      SI<sup>1-2</sup>                      |<sup>1-3</sup>

Internally Flawless	Very Very Slightly Included	Very Slightly Included	Slightly Included	Included
------------------------	--------------------------------	---------------------------	----------------------	----------

## LABORATORY GROWN DIAMOND REPORT



June 27, 2025	
IGI Report Number	LG717586108
Description	LABORATORY GROWN DIAMOND
Shape and Cutting Style	ROUND BRILLIANT
Measurements	11.31 - 11.37 X 6.89 MM
GRADING RESULTS	
Carat Weight	5.45 CARATS
Color Grade	F
Clarity Grade	VVS 2
Cut Grade	EXCELLENT



### ADDITIONAL GRADING INFORMATION

Polish	EXCELLENT
Symmetry	EXCELLENT
Fluorescence	NONE
Inscription(s)	LABGROWN (10) LG1717586108
Comments: This Laboratory Grown Diamond was created by Chemical Vapor Deposition (CVD) growth process. Type IIa	



© IGI 2020, International Gemological Institute

FD - 10 20



THIS DOCUMENT WAS PRODUCED WITH THE FOLLOWING SECURITY MEASURES: SPECIAL DOCUMENT PAPER, INK SCREENS, WATERMARK, BACKGROUND DESIGNS, HOLOGRAM AND OTHER SECURITY FEATURES NOT LISTED AND DO EXCEED DOCUMENT SECURITY INDUSTRY GUIDELINES

**www.igi.org**

June 27, 2025	GI Report No. G77560108	
ROUND BRILLIANT		
Carat Weight	1.31 - 1.37 X 6.89 MM	5.45 CARATS
Color Grade		F
Clarity Grade		VS 2
Depth		EXCELLENT
Table		60.7%
Girdle		61%
Culet		Medium to Slightly Thick (graded)
Polish		Pointed
Symmetry		EXCELLENT
Fluorescence		EXCELLENT
Inscription(s)		NONE
		LABGROWN (g)
		L6777560108
Comments:		
		The Laboratory Grown Diamond was created by Chemical Vapor Deposition (CVD) growth process.
		Type IIA