



**ELECTRONIC COPY**

## LABORATORY GROWN DIAMOND REPORT

LG717586129  
Report verification at [igi.org](https://igi.org)

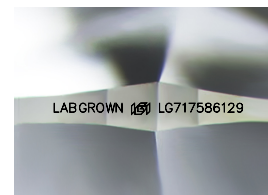
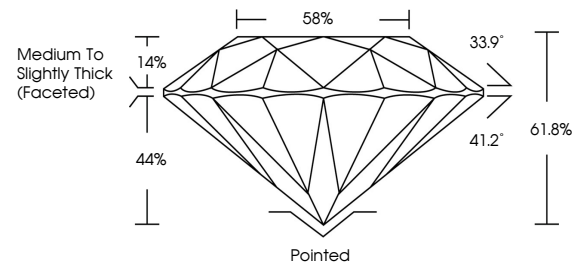
|                         |                          |
|-------------------------|--------------------------|
| July 1, 2025            |                          |
| IGI Report Number       | LG717586129              |
| Description             | LABORATORY GROWN DIAMOND |
| Shape and Cutting Style | ROUND BRILLIANT          |
| Measurements            | 6.71 - 6.74 X 4.16 MM    |
| GRADING RESULTS         |                          |
| Carat Weight            | 1.15 CARAT               |
| Color Grade             | D                        |
| Clarity Grade           | VVS 2                    |
| Cut Grade               | IDEAL                    |

### ADDITIONAL GRADING INFORMATION

|                |                         |
|----------------|-------------------------|
| Polish         | EXCELLENT               |
| Symmetry       | EXCELLENT               |
| Fluorescence   | NONE                    |
| Inscription(s) | LABGROWN 16 LG717586129 |

Comments: This Laboratory Grown Diamond was created by Chemical Vapor Deposition (CVD) growth process.  
Type IIa

## PROPORTIONS



Sample Image Used

## COLOR

D E F G H I J Faint Very Light Light

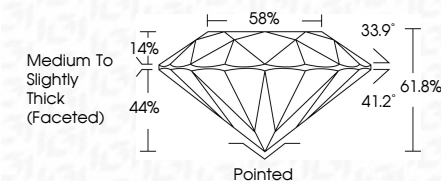
## CLARITY

| IF                  | VS <sup>1-2</sup>           | VS <sup>1-2</sup>      | SI <sup>1-2</sup> | I <sup>1-3</sup> |
|---------------------|-----------------------------|------------------------|-------------------|------------------|
| Internally Flawless | Very Very Slightly Included | Very Slightly Included | Slightly Included | Included         |

## LABORATORY GROWN DIAMOND REPORT



|                         |                          |
|-------------------------|--------------------------|
| July 1, 2025            |                          |
| IGI Report Number       | LG717586129              |
| Description             | LABORATORY GROWN DIAMOND |
| Shape and Cutting Style | ROUND BRILLIANT          |
| Measurements            | 6.71 - 6.74 X 4.16 MM    |
| GRADING RESULTS         |                          |
| Carat Weight            | 1.15 CARAT               |
| Color Grade             | D                        |
| Clarity Grade           | VVS 2                    |
| Cut Grade               | IDEAL                    |



### ADDITIONAL GRADING INFORMATION

|  |                             |
|--|-----------------------------|
| Polish   | EXCELLENT                   |
| Symmetry   | EXCELLENT                   |
| Fluorescence   | NONE                        |
| Inscription(s)   | LABGROWN (IGI) LG1717586129 |
| Comments: This Laboratory Grown Diamond was created by Chemical Vapor Deposition (CVD) growth process. |                             |
| Type IIa   |                             |



IG



© IGI 2020, International Gemological Institute

FD - 10 20



THIS DOCUMENT WAS PRODUCED WITH THE FOLLOWING SECURITY MEASURES: SPECIAL DOCUMENT PAPER, INK SCREENS, WATERMARK, BACKGROUND DESIGNS, HOLOGRAM, AND OTHER SECURITY FEATURES NOT LISTED AND DO EXCEED DOCUMENT SECURITY INDUSTRY GUIDELINES.

**www.igi.org**

July 1, 2025  
GI Report No LG717586129  
ROUND BRILLIANT

|                       |                                    |
|-----------------------|------------------------------------|
| 3.71 - 4.74 X 4.16 MM | 1.16 CARAT                         |
| Color Grade           | D                                  |
| Clarity Grade         | VVS 2                              |
| Cut Grade             | IDEAL                              |
| Depth                 | 61.8%                              |
| Table                 | 59%                                |
| Girdle                | Medium to Slightly Thick (Faceted) |
| Culet                 | Pointed                            |
| Polish                | EXCELLENT                          |
| Symmetry              | EXCELLENT                          |
| Fluorescence          | NONE                               |
| Measurements (in mm)  | 1.85X0.95X0.55                     |

Comments:  
This Laboratory Grown Diamond was  
created by Chemical Vapor Deposition  
(CVD) growth process.