



ELECTRONIC COPY

LABORATORY GROWN DIAMOND REPORT

LG717591141
Report verification at igi.org

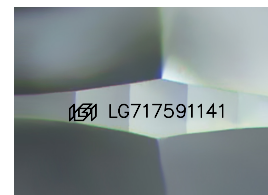
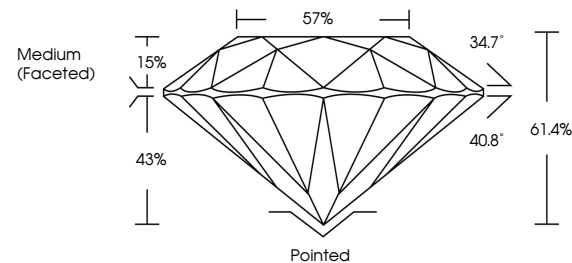
June 24, 2025	
IGI Report Number	LG717591141
Description	LABORATORY GROWN DIAMOND
Shape and Cutting Style	ROUND BRILLIANT
Measurements	10.05 - 10.11 X 6.19 MM
GRADING RESULTS	
Carat Weight	3.87 CARATS
Color Grade	D
Clarity Grade	VS 1
Cut Grade	IDEAL

ADDITIONAL GRADING INFORMATION

Polish	EXCELLENT
Symmetry	EXCELLENT
Fluorescence	NONE
Inscription(s)	 LG717591141

Comments: This Laboratory Grown Diamond was created by Chemical Vapor Deposition (CVD) growth process.
Type IIa

PROPORTIONS



Sample Image Used

COLOR

D E F G H I J Faint Very Light Light

CLARITY

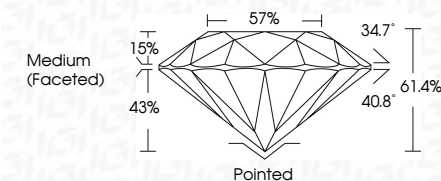
IF VS¹⁻² VS¹⁻² S¹⁻² |¹⁻³

Internally Flawless	Very Very Slightly Included	Very Slightly Included	Slightly Included	Included
------------------------	--------------------------------	---------------------------	----------------------	----------


LABORATORY GROWN DIAMOND REPORT



June 24, 2025	
IGI Report Number	LG717591141
Description	LABORATORY GROWN DIAMOND
Shape and Cutting Style	ROUND BRILLIANT
Measurements	10.05 - 10.11 X 6.19 MM
GRADING RESULTS	
Carat Weight	3.87 CARATS
Color Grade	D
Clarity Grade	VS 1
Cut Grade	IDEAL



ADDITIONAL GRADING INFORMATION

Polish	EXCELLENT
Symmetry	EXCELLENT
Fluorescence	NONE
Inscription(s)	 LG717591141
Comments: This Laboratory Grown Diamond was created by Chemical Vapor Deposition (CVD) growth process.	
Type IIa	



IG



© IGI 2020, International Gemological Institute

FD - 10 20

www.igi.org



THIS DOCUMENT WAS PRODUCED WITH THE FOLLOWING SECURITY MEASURES: SPECIAL DOCUMENT PAPER, INK SCREENS, WATERMARK BACKGROUND DESIGNS, HOLOGRAM AND OTHER SECURITY FEATURES NOT LISTED AND DO EXCEED DOCUMENT SECURITY INDUSTRY GUIDELINES

June 24, 2025
IGI Report No LG717591141
ROUND BRILLIANT

10.05 - 10.11 X 6.19 MM

10.05 - 10.11 X 6.19 MM
Carat Weight 3.87 CARATS

Clarity Grade	VS1	D
Clarity Grade		

	VS 1	IDEAL
Clarity Grade		
Cut Grade		

Depth	61.4%
Table	57%

Table	57%
Girdle	Medium (Faceted)

Culet	Pointed

Culet	Pointed
Polish	EXCELLENT

Polish
Symmetry

Inscription(s)	LG717591141

Comments:

10/10/2017

Comments:
This Laboratory Grown Diamond was

This Laboratory Grown Diamond was created by Chemical Vapor Deposition

Type IIa