



ELECTRONIC COPY

LABORATORY GROWN DIAMOND REPORT

July 6, 2025	
IGI Report Number	LG717591936
Description	LABORATORY GROWN DIAMOND
Shape and Cutting Style	ROUND BRILLIANT
Measurements	8.13 - 8.17 X 5.08 MM
GRADING RESULTS	
Carat Weight	2.09 CARATS
Color Grade	D
Clarity Grade	INTERNALLY FLAWLESS
Cut Grade	IDEAL

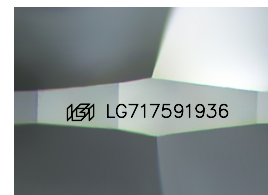
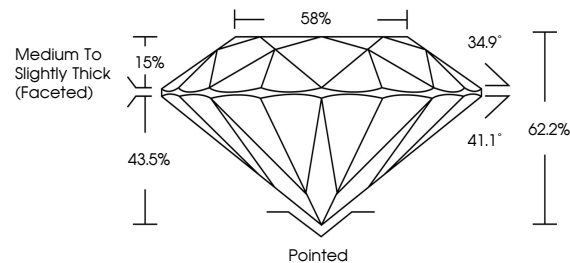
ADDITIONAL GRADING INFORMATION

Polish	EXCELLENT
Symmetry	EXCELLENT
Fluorescence	NONE
Inscription(s)	 LG717591936

Comments: As Grown - No indication of post-growth treatment.
This Laboratory Grown Diamond was created by High Pressure High Temperature (HPHT) growth process.
Type II

LG717591936
Report verification at igi.org

PROPORTIONS



Sample Image Used

COLOR

D E F G H I J Faint Very Light Light

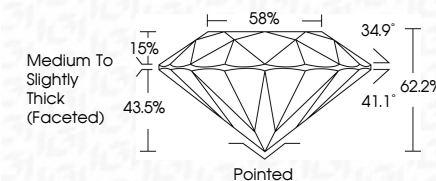
CLARITY

IF	VVS ¹⁻²	VS ¹⁻²	SI ¹⁻²	I ¹⁻³
Internally Flawless	Very Very Slightly Included	Very Slightly Included	Slightly Included	Included

LABORATORY GROWN DIAMOND REPORT



July 6, 2025	
IGI Report Number	LG717591936
Description	LABORATORY GROWN DIAMOND
Shape and Cutting Style	ROUND BRILLIANT
Measurements	8.13 - 8.17 X 5.08 MM
GRADING RESULTS	
Carat Weight	2.09 CARATS
Color Grade	D
Clarity Grade	INTERNALLY FLAWLESS
Cut Grade	IDEAL



ADDITIONAL GRADING INFORMATION

Polish	EXCELLENT
Symmetry	EXCELLENT
Fluorescence	NONE
Inscription(s)	(G) LG717591936
<p>Comments: As Grown - No indication of post-growth treatment.</p> <p>This Laboratory Grown Diamond was created by High Pressure High Temperature (HPHT) growth process.</p> <p>Type II</p>	



© IGI 2020, International Gemological Institute

FD - 10 20



THIS DOCUMENT WAS PRODUCED WITH THE FOLLOWING SECURITY MEASURES: SPECIAL DOCUMENT PAPER, INK SCREENS, WATERMARK, BACKGROUND DESIGNS, HOLOGRAM AND OTHER SECURITY FEATURES NOT LISTED AND DO EXCEED DOCUMENT SECURITY INDUSTRY GUIDELINES

www.igi.org

JUN 6, 2025 GI Report No. G2717591936 ROUND BRILLIANT	2.09 CARATS D IF IDEAL 62.2% 58% Medium to Slightly Thick (faceted)	Polished EXCELLENT EXCELLENT NONE #61 G2717591936	Comments: This growth - No indication of post-growth treatment. The secondary Growth Diamond was created by High Pressure High temperature (HPHT) growth process.
2.09 CARATS D IF IDEAL 62.2% 58% Medium to Slightly Thick (faceted)	Polished EXCELLENT EXCELLENT NONE #61 G2717591936	Comments: This growth - No indication of post-growth treatment. The secondary Growth Diamond was created by High Pressure High temperature (HPHT) growth process.	Type II