

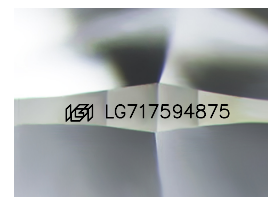
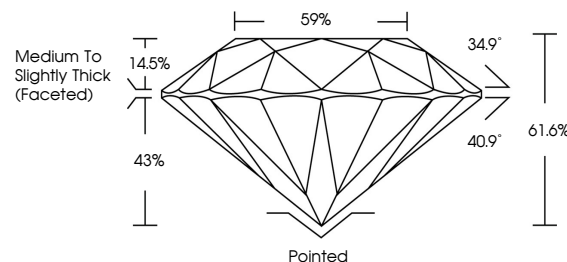


ELECTRONIC COPY

LABORATORY GROWN DIAMOND REPORT

LG717594875
Report verification at [igi.org](https://www.igi.org)

PROPORTIONS



Sample Image Used

CLARITY CHARACTERISTICS



KEY TO SYMBOLS

Red symbols indicate internal characteristics.
Green symbols indicate external characteristics.



www.igi.org

LABORATORY GROWN DIAMOND REPORT



June 26, 2025

IGI Report Number **LG717594875**Description **LABORATORY GROWN DIAMOND**Shape and Cutting Style **ROUND BRILLIANT**

Measurements	6.55 - 6.60 X 4.05 MM
--------------	-----------------------

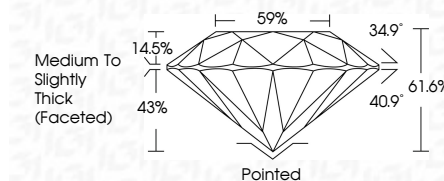
GRADING RESULTS

Carat Weight 1.08 CARAT

Color Grade D

Clarity Grade **INTERNALLY FLAWLESS**

Cut Grade **IDEAL**



ADDITIONAL GRADING INFORMATION

Polish **EXCELLENT**Symmetry **EXCELLENT**Fluorescence **NONE**Inscription(s) **13** LG717594875

Comments: HEARTS & ARROWS

As Grown - No indication of post-growth treatment.

This Laboratory Grown Diamond was created by High

Pressure High Temperature (HPHT) growth process.

Type II



IG

June 26, 2025	GI Report No. LG717594875	ROUND BRILLIANT	1.08 CARAT	D	IF	IDEAL	0.10%	59%	Medium to Slightly Thick (Faceted)	Portined	Excellent	EXCELLENT	NONE	681 LG717594875	Comments: As Grown - No indication of post-growth treatment. The Laboratory Grown Diamond was created by High Pressure High Temperature (HPHT) growth process.
			5.55 - 4.60 X 4.05 MM	Color Grade	Clarity Grade	Cut Grade	Depth	Table	Girdle	Quet	Polish	Symmetry	Fluorescence	Inscriptions(s)	

© IGI 2020, International Gemological Institute

FD - 10 20



THIS DOCUMENT WAS PRODUCED WITH THE FOLLOWING SECURITY MEASURES: SPECIAL DOCUMENT PAPER, INK SCREENS, WATERMARK, BACKGROUND DESIGNS, HOLOGRAM AND OTHER SECURITY FEATURES NOT LISTED AND DO EXCEED DOCUMENT SECURITY INDUSTRY GUIDELINE