



ELECTRONIC COPY

LABORATORY GROWN DIAMOND REPORT

June 26, 2025	
IGI Report Number	LG717597066
Description	LABORATORY GROWN DIAMOND
Shape and Cutting Style	ROUND BRILLIANT
Measurements	9.17 - 9.22 X 5.82 MM

GRADING RESULTS

Carat Weight	3.04 CARATS
Color Grade	E
Clarity Grade	VVS 2
Cut Grade	EXCELLENT

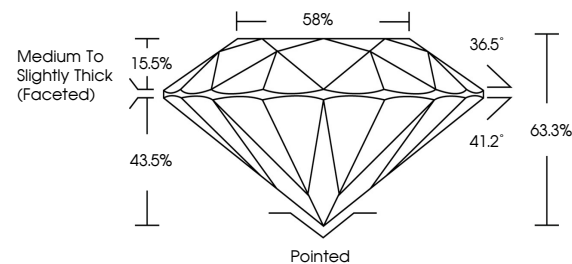
ADDITIONAL GRADING INFORMATION

Polish	EXCELLENT
Symmetry	EXCELLENT
Fluorescence	NONE
Inscription(s)	 LG717597066

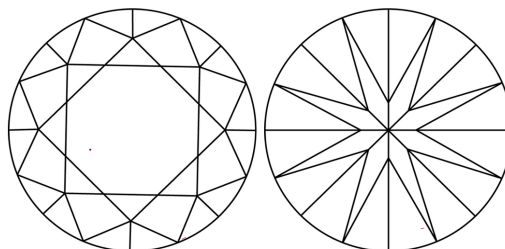
Comments: This Laboratory Grown Diamond was created by Chemical Vapor Deposition (CVD) growth process.
Type IIa

LG717597066
Report verification at igi.org

PROPORTIONS

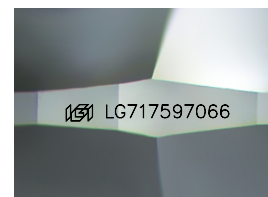


CLARITY CHARACTERISTICS



KEY TO SYMBOLS

Red symbols indicate internal characteristics.
Green symbols indicate external characteristics.



Sample Image Used

COLOR

D E F G H I J Faint Very Light Light

CLARITY

IF VS¹⁻² VS¹⁻² S¹⁻² |¹⁻³

Internally Flawless	Very Very Slightly Included	Very Slightly Included	Slightly Included	Included
------------------------	--------------------------------	---------------------------	----------------------	----------

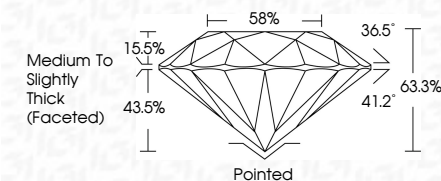
LABORATORY GROWN DIAMOND REPORT



June 26, 2025	
IGI Report Number	LG717597066
Description	LABORATORY GROWN DIAMOND
Shape and Cutting Style	ROUND BRILLIANT
Measurements	9.17 - 9.22 X 5.82 MM

GRADING RESULTS

Carat Weight	3.04 CARATS
Color Grade	E
Clarity Grade	VVS 2
Cut Grade	EXCELLENT



ADDITIONAL GRADING INFORMATION

Polish	EXCELLENT
Symmetry	EXCELLENT
Fluorescence	NONE
Inscription(s)	 LG717597066
<p>Comments: This Laboratory Grown Diamond was created by Chemical Vapor Deposition (CVD) growth process.</p> <p>Type IIa</p>	



IG



© IGI 2020, International Gemological Institute

FD - 10 20



THIS DOCUMENT WAS PRODUCED WITH THE FOLLOWING SECURITY MEASURES: SPECIAL DOCUMENT PAPER, INK SCREENS, WATERMARK, BACKGROUND DESIGNS, HOLOGRAM AND OTHER SECURITY FEATURES NOT LISTED AND DO EXCEED DOCUMENT SECURITY INDUSTRY GUIDELINES

www.igi.org

June 26, 2025
GI Report No LG717597066
ROUND BRILLIANT

19.17 - 9.22 X 5.82 MM	3.04 CARATS	E
Carat Weight	VVS 2	EXCELLENT
Color Grade	GIA Grade	63.5%
Clarity Grade	Cut Grade	58%
Depth		Medium to slightly Thick (faceted)
Table		
Girdle		
Culet		Poined
Polish		EXCELLENT
Symmetry		EXCELLENT
Fluorescence		NONE
Comments:		gem / CTD / 7520204

Comments:
This Laboratory Grown Diamond was created by Chemical Vapor Deposition (CVD) growth process.