



**ELECTRONIC COPY**

## LABORATORY GROWN DIAMOND REPORT

LG718501025  
Report verification at [igi.org](https://igi.org)

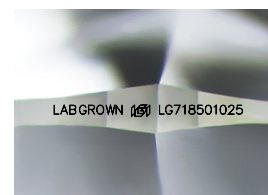
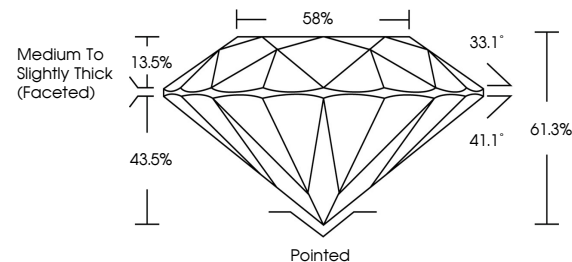
July 4, 2025	
IGI Report Number	LG718501025
Description	LABORATORY GROWN DIAMOND
Shape and Cutting Style	ROUND BRILLIANT
Measurements	9.11 - 9.13 X 5.59 MM
GRADING RESULTS	
Carat Weight	2.86 CARATS
Color Grade	E
Clarity Grade	VVS 2
Cut Grade	IDEAL

### ADDITIONAL GRADING INFORMATION

Polish	EXCELLENT
Symmetry	EXCELLENT
Fluorescence	NONE
Inscription(s)	LABGROWN 15 LG718501025

Comments: This Laboratory Grown Diamond was created by Chemical Vapor Deposition (CVD) growth process.  
Type IIa

## PROPORTIONS



Sample Image Used

## COLOR

D E F G H I J Faint Very Light Light

## CLARITY

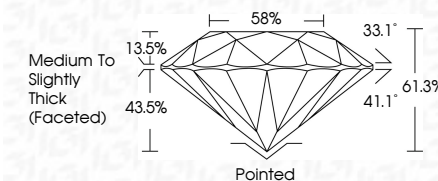
IF                      WS<sup>1-2</sup>                      VS<sup>1-2</sup>                      SI<sup>1-2</sup>                      |<sup>1-3</sup>

Internally Flawless	Very Very Slightly Included	Very Slightly Included	Slightly Included	Included
------------------------	--------------------------------	---------------------------	----------------------	----------

## LABORATORY GROWN DIAMOND REPORT



July 4, 2025	
IGI Report Number	LG718501025
Description	LABORATORY GROWN DIAMOND
Shape and Cutting Style	ROUND BRILLIANT
Measurements	9.11 - 9.13 X 5.59 MM
GRADING RESULTS	
Carat Weight	2.86 CARATS
Color Grade	E
Clarity Grade	VVS 2
Cut Grade	IDEAL



### ADDITIONAL GRADING INFORMATION

Polish	EXCELLENT
Symmetry	EXCELLENT
Fluorescence	NONE
Inscription(s)	LABGROWN (H) LG718501025
Comments: This Laboratory Grown Diamond was created by Chemical Vapor Deposition (CVD) growth process.	
Type IIA	



© IGI 2020, International Gemological Institute

FD - 10 20



THIS DOCUMENT WAS PRODUCED WITH THE FOLLOWING SECURITY MEASURES: SPECIAL DOCUMENT PAPER, INK SCREENS, WATERMARK, BACKGROUND DESIGNS, HOLOGRAM AND OTHER SECURITY FEATURES NOT LISTED AND DO EXCEED DOCUMENT SECURITY INDUSTRY GUIDELINES

**www.igi.org**

JULY 4, 2025 GI Report No. G271801025 ROUNDED BRILLIANT	1.11 - 0.13 X 5.59 MM Carat Weight Color Grade Clarity Grade Cut Grade Depth Table Girdle	2.66 CARATS E VS2 IDEAL 61.5% 55% Medium to Slightly Thick (Faceted)	Polished EXCELLENT EXCELLENT NONE LABGROWN 1891 LG71801025	Comments: The Laboratory Grown Diamond was created by Chemical Vapor Deposition (CVD) growth process. Type IIa
---	--	---	---	--