



**ELECTRONIC COPY**

## LABORATORY GROWN DIAMOND REPORT

LG718501380  
Report verification at [igi.org](https://igi.org)

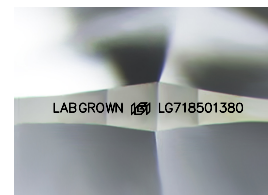
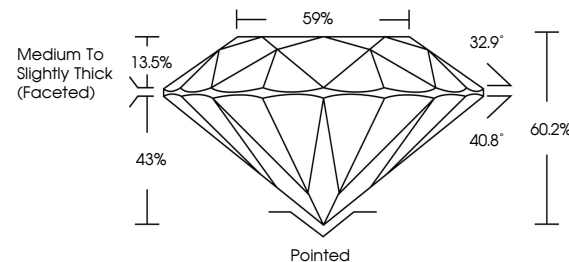
July 5, 2025	
IGI Report Number	LG718501380
Description	LABORATORY GROWN DIAMOND
Shape and Cutting Style	ROUND BRILLIANT
Measurements	12.69 - 12.76 X 7.67 MM
GRADING RESULTS	
Carat Weight	7.64 CARATS
Color Grade	F
Clarity Grade	VVS 2
Cut Grade	IDEAL

### ADDITIONAL GRADING INFORMATION

Polish	EXCELLENT
Symmetry	EXCELLENT
Fluorescence	NONE
Inscription(s)	LABGROWN 16 LG718501380

Comments: This Laboratory Grown Diamond was created by Chemical Vapor Deposition (CVD) growth process.  
Type IIa

## PROPORTIONS



Sample Image Used

## COLOR

D E F G H I J Faint Very Light Light

## CLARITY

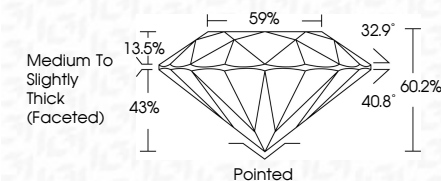
IF                      VS<sup>1-2</sup>                      VS<sup>1-2</sup>                      S<sup>1-2</sup>                      |<sup>1-3</sup>

Internally Flawless	Very Very Slightly Included	Very Slightly Included	Slightly Included	Included
------------------------	--------------------------------	---------------------------	----------------------	----------

## LABORATORY GROWN DIAMOND REPORT



July 5, 2025	
IGI Report Number	LG718501380
Description	LABORATORY GROWN DIAMOND
Shape and Cutting Style	ROUND BRILLIANT
Measurements	12.69 - 12.76 X 7.67 MM
GRADING RESULTS	
Carat Weight	7.64 CARATS
Color Grade	F
Clarity Grade	VVS 2
Cut Grade	IDEAL



### ADDITIONAL GRADING INFORMATION

Polish	EXCELLENT
Symmetry	EXCELLENT
Fluorescence	NONE
Inscription(s)	LABGROWN (LG) LG718501380
Comments: This Laboratory Grown Diamond was created by Chemical Vapor Deposition (CVD) growth process.	
Type IIa	



IG



© IGI 2020, International Gemological Institute

FD - 10 20



THIS DOCUMENT WAS PRODUCED WITH THE FOLLOWING SECURITY MEASURES: SPECIAL DOCUMENT PAPER, INK SCREENS, WATERMARK, BACKGROUND DESIGNS, HOLOGRAM AND OTHER SECURITY FEATURES NOT LISTED AND DO EXCEED DOCUMENT SECURITY INDUSTRY GUIDELINES

**www.igi.org**

JULY 5, 2025 GJ Report No. G2718501380 ROUND BRILLIANT	12.49 - 12.76 X 7.67 MM Carat Weight Color Grade Clarity Grade Cut Grade Table Girdle Culet Polish Symmetry Fluorescence Inscriptions(s)	7.64 CARATS F VS2 IDEAL 60.2% 59% Medium to Slightly Thick (Faceted) Pointed EXCELLENT EXCELLENT NONE LABGROWN 189 LG718501380	Comments: This Laboratory Grown Diamond was created by Chemical Vapor Deposition (CVD) growth process. Type IIa
--	---	---	---