



**ELECTRONIC COPY**

## LABORATORY GROWN DIAMOND REPORT

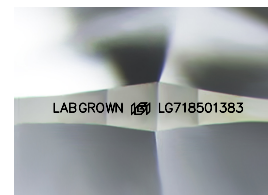
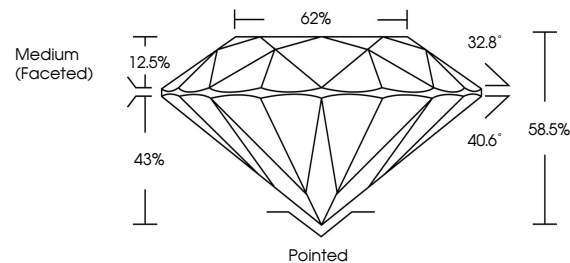
LG718501383  
Report verification at [igi.org](https://igi.org)

July 5, 2025	
IGI Report Number	LG718501383
Description	LABORATORY GROWN DIAMOND
Shape and Cutting Style	ROUND BRILLIANT
Measurements	13.35 - 13.42 X 7.84 MM
GRADING RESULTS	
Carat Weight	8.59 CARATS
Color Grade	F
Clarity Grade	VS 1
Cut Grade	EXCELLENT

### ADDITIONAL GRADING INFORMATION

Polish	EXCELLENT
Symmetry	EXCELLENT
Fluorescence	NONE
Inscription(s)	LABGROWN 161 LG718501383
Comments: This Laboratory Grown Diamond was created by Chemical Vapor Deposition (CVD) growth process.	
Type IIa	

## PROPORTIONS



Sample Image Used

**COLOR**

D E F G H I J Faint Very Light Light

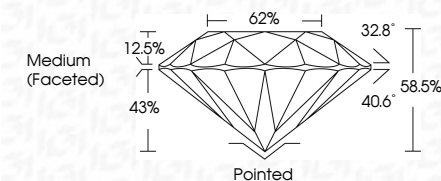
## CLARITY

IF	VS <sup>1-2</sup>	VS <sup>1-2</sup>	SI <sup>1-2</sup>	I <sup>1-3</sup>
Internally Flawless	Very Very Slightly Included	Very Slightly Included	Slightly Included	Included

## LABORATORY GROWN DIAMOND REPORT



July 5, 2025	
IGI Report Number	LG718501383
Description	LABORATORY GROWN DIAMOND
Shape and Cutting Style	ROUND BRILLIANT
Measurements	13.35 - 13.42 X 7.84 MM
GRADING RESULTS	
Carat Weight	8.59 CARATS
Color Grade	F
Clarity Grade	VS 1
Cut Grade	EXCELLENT



### ADDITIONAL GRADING INFORMATION

Polish	EXCELLENT
Symmetry	EXCELLENT
Fluorescence	NONE
Inscription(s)	LABGROWN (IGI) LG718501383
Comments: This Laboratory Grown Diamond was created by Chemical Vapor Deposition (CVD) growth process.	
Type IIa	



© IGI 2020, International Gemological Institute

FD - 10 20



THIS DOCUMENT WAS PRODUCED WITH THE FOLLOWING SECURITY MEASURES: SPECIAL DOCUMENT PAPER, INK SCREENS, WATERMARK, BACKGROUND DESIGNS, HOLOGRAM, AND OTHER SECURITY FEATURES NOT LISTED AND DO EXCEED DOCUMENT SECURITY INDUSTRY GUIDELINES

**www.igi.org**

JULY 5, 2025 GJ Report No. 16718601393 ROUND BRILLIANT 13.35 - 13.42 X 7.84 MM	Carat Weight Color Grade Clarity Grade Cut Grade Depth Table Girdle	8.59 CARATS F VS 1 EXCELLENT 59.5% 62% Medium (Faceted)	Pointed EXCELLENT EXCELLENT NONE LABGROWN 1691 16718601393	Comment: The Laboratory Grown Diamond was created by Chemical Vapor Deposition (CVD) growth process. Type IIa
---	---	---	---	---