



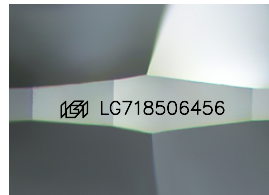
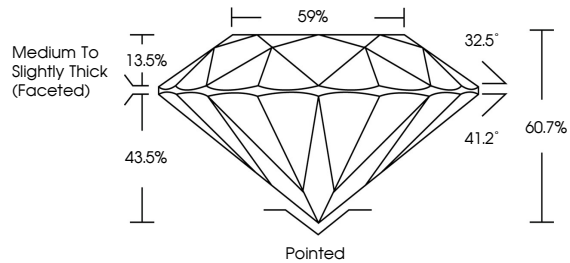
**INTERNATIONAL
GEMOLOGICAL
INSTITUTE**

ELECTRONIC COPY

LABORATORY GROWN DIAMOND REPORT

LG718506456
Report verification at [igi.org](https://www.igi.org)

PROPORTIONS



Sample Image Used

COLOR

D E F G H I J Faint Very Light Light

CLARITY

IF WS¹⁻² VS¹⁻² SI¹⁻² I¹⁻³

Internally Flawless	Very Very Slightly Included	Very Slightly Included	Slightly Included	Included
---------------------	-----------------------------	------------------------	-------------------	----------

LABORATORY GROWN DIAMOND REPORT



July 6, 2025

IGI Report Number **LG718506456**

Description	LABORATORY GROWN DIAMOND
-------------	--------------------------

Shape and Cutting Style **ROUND BRILLIANT**

Measurements **6.48 - 6.50 X 3.94 MM**

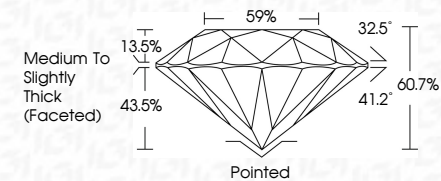
GRADING RESULTS

Carat Weight **1.02 CARAT**

Color Grade **F**

Clarity Grade **INTERNALLY FLAWLESS**

Cut Grade **EXCELLENT**



ADDITIONAL GRADING INFORMATION

Polish **EXCELLENT**Symmetry **EXCELLENT**Fluorescence **NONE**Inscription(s) **131** LG718506456

Comments: This Laboratory Grown Diamond was created by Chemical Vapor Deposition (CVD) growth process.
Type IIa



IGI

JUNE 6, 2025 IGI REPORT NO. I671 880466 ROUND BRILLIANT	6.48 - 6.60 X 3.94 MM Color Weight Carat Grade	1.02 CARAT F	Clarity Grade Cut Grade Depth Table Girdle	IF EXCELLENT 60.7% 59% Medium to Slightly Thick (excellent)	Pointed EXCELLENT EXCELLENT NONE #61 L671880466	Comments: This Laboratory Grown Diamond was created by Chemical Vapor Deposition (CVD) growth process. Type IIa
---	--	-----------------	--	--	---	---

www.igi.org

© IGI 2020, International Gemological Institute

FD - 10 20



THIS DOCUMENT WAS PRODUCED WITH THE FOLLOWING SECURITY MEASURES: SPECIAL DOCUMENT PAPER, INK SCREENS, WATERMARK, BACKGROUND DESIGNS, HOLOGRAM AND OTHER SECURITY FEATURES NOT LISTED AND DO EXCEED DOCUMENT SECURITY INDUSTRY GUIDELINES