



**ELECTRONIC COPY**

## LABORATORY GROWN DIAMOND REPORT

|                         |                          |
|-------------------------|--------------------------|
| June 30, 2025           |                          |
| IGI Report Number       | LG718509000              |
| Description             | LABORATORY GROWN DIAMOND |
| Shape and Cutting Style | ROUND BRILLIANT          |
| Measurements            | 8.13 - 8.18 X 4.99 MM    |

## GRADING RESULTS

|               |             |
|---------------|-------------|
| Carat Weight  | 2.04 CARATS |
| Color Grade   | D           |
| Clarity Grade | VVS 1       |
| Cut Grade     | IDEAL       |

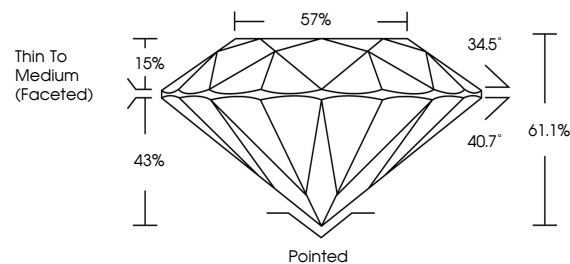
### ADDITIONAL GRADING INFORMATION

|                |   |
|----------------|---|
| Polish         | EXCELLENT   |
| Symmetry       | EXCELLENT   |
| Fluorescence   | NONE  |
| Inscription(s) |  LG718509000 |

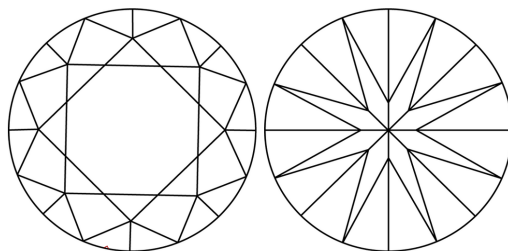
Comments: As Grown - No indication of post-growth treatment.  
This Laboratory Grown Diamond was created by High Pressure High Temperature (HPHT) growth process.  
Type II

LG718509000  
Report verification at [igi.org](https://igi.org)

## PROPORTIONS

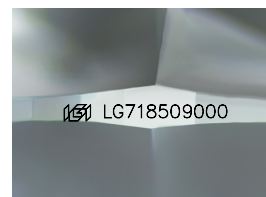


## CLARITY CHARACTERISTICS



## KEY TO SYMBOLS

Red symbols indicate internal characteristics.  
Green symbols indicate external characteristics.



Sample Image Used

**COLOR**

D E F G H I J Faint Very Light Light

## CLARITY

IF                      VS<sup>1-2</sup>                      VS<sup>1-2</sup>                      SI<sup>1-2</sup>                      I<sup>1-3</sup>

|                        |                                |                           |                      |          |
|------------------------|--------------------------------|---------------------------|----------------------|----------|
| Internally<br>Flawless | Very Very<br>Slightly Included | Very<br>Slightly Included | Slightly<br>Included | Included |
|------------------------|--------------------------------|---------------------------|----------------------|----------|

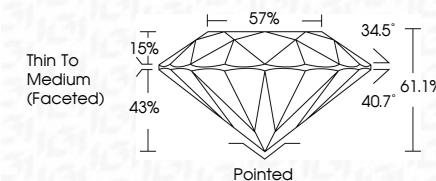
## LABORATORY GROWN DIAMOND REPORT



|                         |                          |
|-------------------------|--------------------------|
| June 30, 2025           |                          |
| IGI Report Number       | LG718509000              |
| Description             | LABORATORY GROWN DIAMOND |
| Shape and Cutting Style | ROUND BRILLIANT          |
| Measurements            | 8.13 - 8.18 X 4.99 MM    |

## GRADING RESULTS

|               |             |
|---------------|-------------|
| Carat Weight  | 2.04 CARATS |
| Color Grade   | D           |
| Clarity Grade | VVS 1       |
| Cut Grade     | IDEAL       |



### ADDITIONAL GRADING INFORMATION

|  |                            |
|--|----------------------------|
| Polish   | EXCELLENT                  |
| Symmetry   | EXCELLENT                  |
| Fluorescence   | NONE                       |
| Inscription(s)   | <del>(G)</del> LG718509000 |
| Comments: As Grown - No indication of post-growth treatment.                                       |                            |
| This Laboratory Grown Diamond was created by High Pressure High Temperature (HPHT) growth process. |                            |
| Type II  |                            |



© IGI 2020, International Gemological Institute

FD - 10 20



THIS DOCUMENT WAS PRODUCED WITH THE FOLLOWING SECURITY MEASURES: SPECIAL DOCUMENT PAPER, INK SCREENS, WATERMARK, BACKGROUND DESIGNS, HOLOGRAM AND OTHER SECURITY FEATURES NOT LISTED AND DO EXCEED DOCUMENT SECURITY INDUSTRY GUIDELINES

**www.igi.org**

|                          |                       |  |             |
|--------------------------|-----------------------|--|-------------|
| Line 30, 2025            | Line 18, 18 X 4.95 MM | Carat Weight   | 2.04 CARATS |
| GJ Report No. G271850000 | Color Grade           | D  |             |
| ROUND BRILLIANT          | Clarity Grade         | VVS 1  |             |
|                          | Cut Grade             | IDEAL  |             |
|                          | Depth                 | 61.1%  |             |
|                          | Table                 | 57%  |             |
|                          | Grade                 | Thin To Medium<br>(Faced)  |             |
|                          | Culet                 | Pointed  |             |
|                          | Polish                | EXCELLENT  |             |
|                          | Symmetry              | EXCELLENT  |             |
|                          | Fluorescence          | NONE   |             |
|                          | Inscriptions(s)       | 489 LG71850000   |             |
| Comments:                |                       | As Grown - No indication of post-growth<br>treatment.<br>This Laboratory Grown Diamond was<br>created by High Pressure High<br>Temperature (HPHT) growth process.<br>Type II |             |